



Harlem



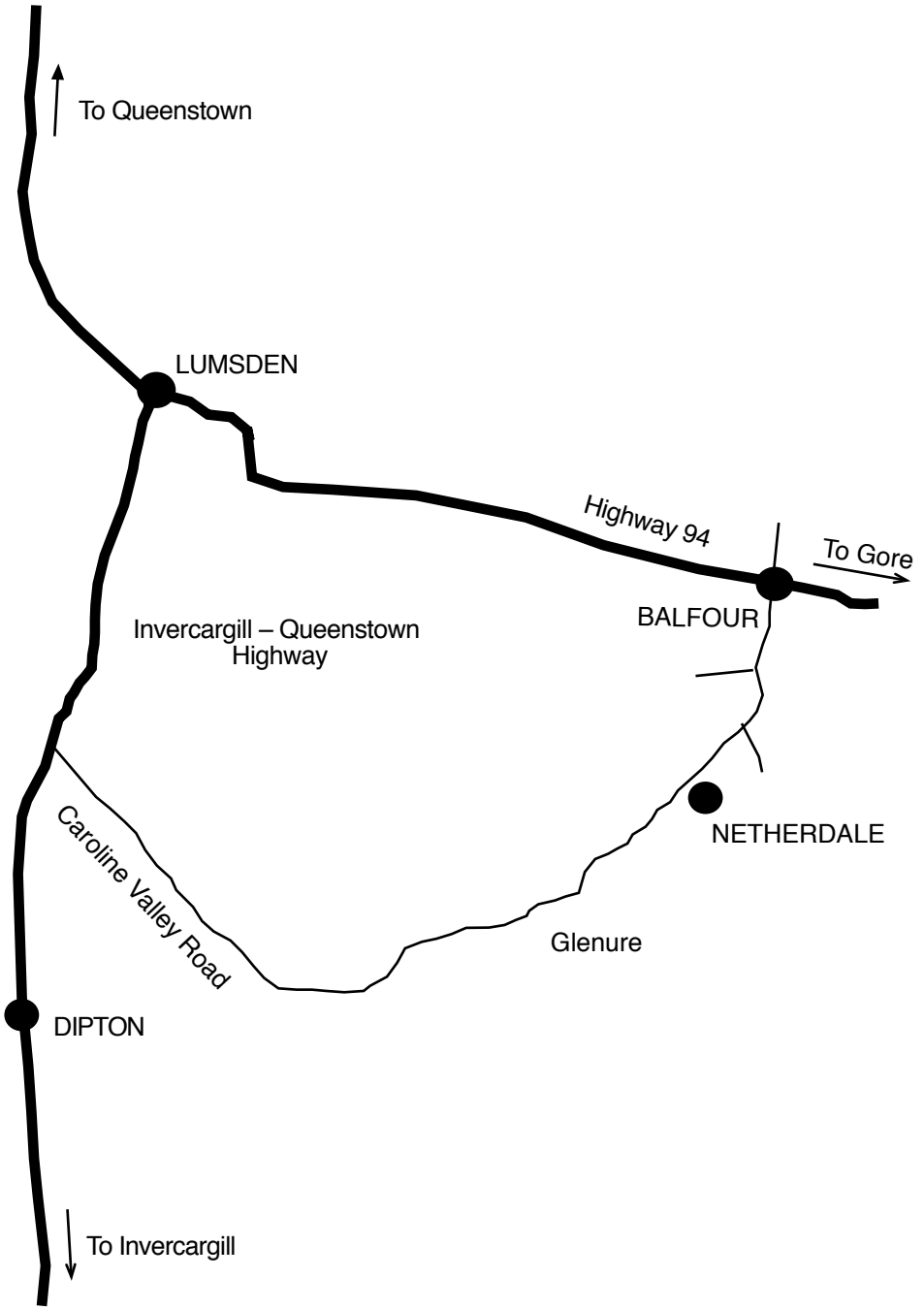
Bronx 5yro 17.28 kg SA2

Approx. 30 - 3 year old sires, top weight of 11.28kg

Approx. 70 - 2 year old velvet stags

Approx. 40 - Rising 2 year old recorded hinds

Thirty Third Annual
Elite Red Deer Sale
Wednesday 15th January 2020
1:30pm on the property at Balfour





A warm welcome to our 33th Netherdale Elite Red Deer Sale.

The velvetting once again has been a challenge this season with very cold and wet conditions throughout September, October and November in Southland. This has led to a number of Sale Stags with heads still on at the time of cataloguing. Because of the lateness of the season the Breeding values in the catalogue are the sire's 2 year old values. An update of the 3 year old EBV information along with photos of the uncut sire's will be made available on our website as soon as possible.

It is very pleasing to see this year's line up of 3 year old sire's on offer (those cut at the time of cataloguing) have an average velvet weight of 8 kg which is up on last year's average of 7.78 kg.

This year is an exceptional line up, a representation of our top producing sire's, Harlem, Capone, Henshaw, Feetwood, Bronx and 13194 progeny on offer.

Again, every effort has been made to cut heads correctly, giving you the ability to assess an honest weight and grade, eliminating any guess work. All 3 year old stag's heads will be displayed on sale day along with photos with heads on.

Approximately 70 two year old velvet stag's will be on offer. As in the past, the two year old stag's are progeny from our stud hinds and do shift particularly well.

We do feed crushed grain to our stag's from button drop but we DO NOT FEED PKE.

We will once again be offering a good selection of young hinds from our top sire's, Bronx who cut 22 kg of velvet this season, the last of Harlem's maiden hinds available on offer, Capone, Henshaw, Fleetwood and 12207.

Thank you for your support in the past, we are very appreciative of that support and the friendships we have made over the 34 years we have held sale's and would like to wish everyone a Merry Christmas and a Happy New Year. We look forward to catching up with you on the 15th January 2020 at 1.30pm.

Kind Regards
David and Lynley
Netherdale

CONDITIONS OF SALE

1. The sale will be conducted by PGG Wrightson with the conditions of sale as set down by the New Zealand Stock and Station Agents Association, a copy of which is exhibited in the office on sale day.
2. Each lot becomes the purchaser's property and risk at the fall of the hammer.
3. Warranties and insurance are covered under separate headings.
4. Intending purchasers are required to register prior to commencement of sale.
5. The sale is conducted G.S.T. exclusive.
6. Terms will be strictly cash unless prior arrangements are made with the Auctioneers. Accounts not paid within 14 days of sale shall bear interest at current rate per annum from the date of sale.
7. A buyers commission of 4% is payable to non-participating companies and recognised independent agents introducing and accompanying purchasers to the sale providing prior arrangements (no later than 24 hours prior to commencement of sale) are made with PGG Wrightson.
8. Transit and Livestock Insurance can be arranged by the Auctioneers who recommend these insurances to all purchasers.
9. No animals, embryos or semen sold by Netherdale Red Deer, or their germplasm, any subsequent progeny or germplasm, including the semen and germplasm of that progeny, may be supplied to a third party without the written permission of the respective stud.
10. This condition does not affect normal commercial deer farming or stud farming or the normal sales of semen or embryos as it only applies to entities with the primary function of commercial semen/germplasm activities.
11. It is a condition of sale of any animals, embryos, germplasm or semen sold by Netherdale Red Deer, that the purchaser agrees to include the following clause as a condition of any subsequent sale or gift of any animal, embryo, semen, germplasm or subsequent progeny or germplasm to a third party - "the purchaser acknowledges that it will not supply any animals, embryos, semen or germplasm to any commercial semen/germplasm marketing or sales entity, and will ensure that this clause is inserted as a condition of any sale or gift of any animals, embryos, semen or germplasm."
12. The responsibility for the description of deer in the sale are supplied by the vendors who alone are responsible for their accuracy.
13. Except as otherwise expressly provided in these conditions, no guarantee, representation or warranty of any kind is made or given as to the soundness, condition or other quality of any livestock sold in this sale.

DISCLAIMER

All details and descriptions as to stock referred to in this catalogue have been supplied to PGG Wrightson by the Vendor and have not been independently verified by PGG Wrightson. PGG Wrightson, its employees and agents make no representations or warranties or acknowledgement of any kind whatsoever in relation to any part of this catalogue (including, but not limited to the accuracy or completeness of details and descriptions of stock [and other contents]).

Purchasers, advisors and all other persons viewing or dealing with the stock must make their own assessment and judgement on the stock and the information in this catalogue.

PGG Wrightson, its employees and agents are not responsible or liable in any way whatsoever, whether in contract, tort (including negligence), or otherwise, to any person for any loss or damage whatsoever arising directly or indirectly from any information or representation included in or omitted from this catalogue.

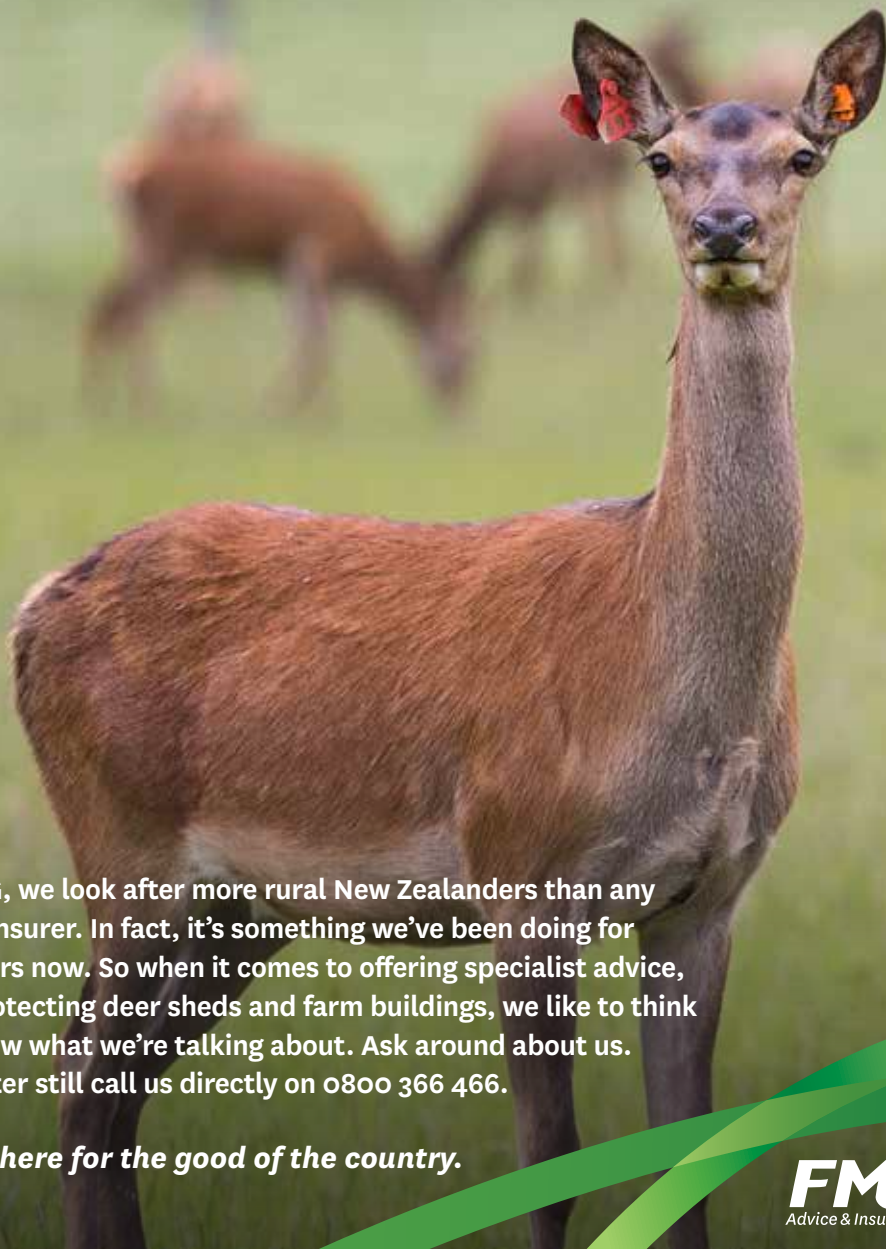
TB STATUS C10 The property is QA accredited.

ENQUIRIES: David Stevens, Phone/Fax 03-201 6330, Mobile 0274-331 383
netherdale@xtra.co.nz www.netherdale.co.nz

Ben Beadle, PGG Wrightson, Mobile 0277-281 052

Graham Kinsman, PGG Wrightson, Mobile 0274-223 154 or your local PGG Wrightson agent

WHEN YOUR ADVICE IS REALLY GOOD, EVERYONE LISTENS.



At FMG, we look after more rural New Zealanders than any other insurer. In fact, it's something we've been doing for 114 years now. So when it comes to offering specialist advice, like protecting deer sheds and farm buildings, we like to think we know what we're talking about. Ask around about us. Or better still call us directly on 0800 366 466.

We're here for the good of the country.

FMG
Advice & Insurance

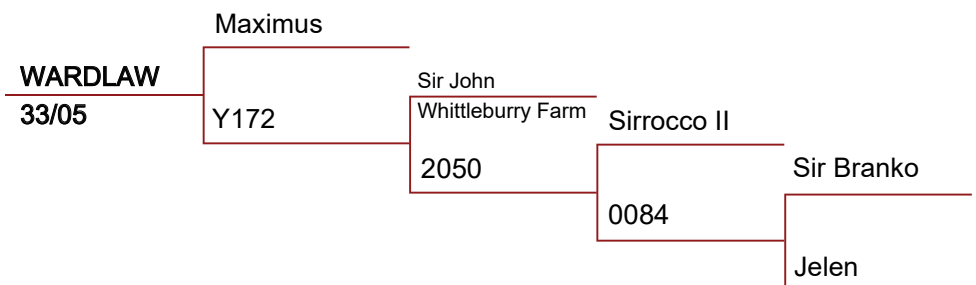
SIRE REFERENCE



Wardlaw (8.60kg SA2 @ 5yrs)

Wardlaw is a fantastic all rounder. Big, quiet and a very tidy velvet head.

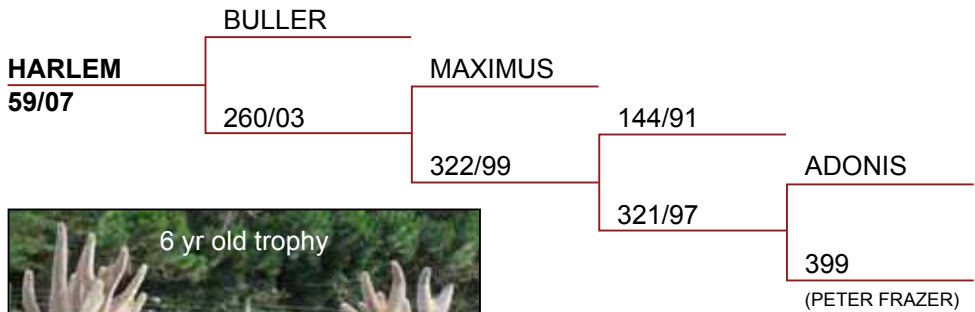
Grown out to SS velvet as a 3 year old with a huge 10.72kg head, very tidy and looking to be a very high scoring trophy. 3 sons have won the National 3yr old competition.



SIRE REFERENCE



Harlem (Deceased)



PERFORMANCE DATA:

2yrs - 5.48kg SA2 (Placed NZ 2yr old Competition)

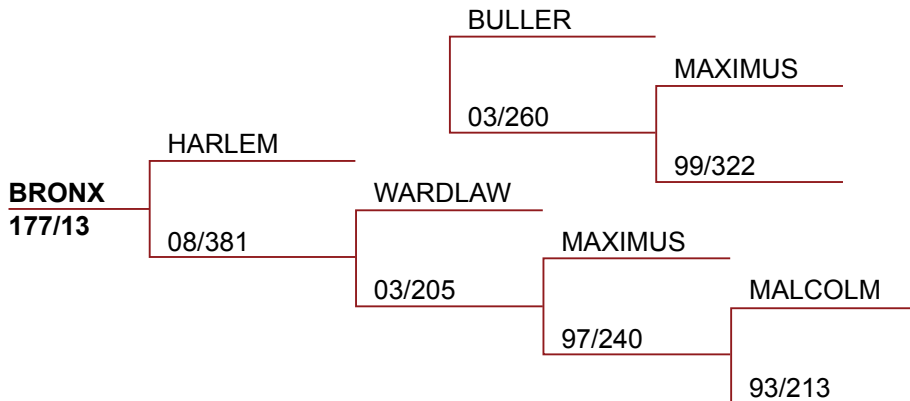
4yrs - 8.45kg SA2 @ 4 years

5yrs - 8.88kg SA2, Winner of the 5 year old section - National Velvet Competition 2012

SIRE REFERENCE



Bronx



PERFORMANCE DATA:

Velvet weights:

2yrs - 6.20kg SA2

3yrs - 8.42kg SA2 NZ Champion 3yr old Red

4yrs - 20.64kg OG

5yrs - 17.28kg SA2

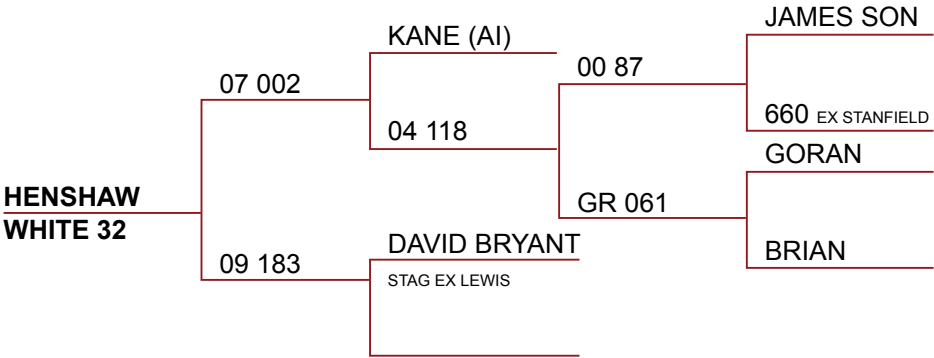
Comments:

An amazing, big stag with a great temperament and beautiful velvet.

SIRE REFERENCE



Henshaw



PERFORMANCE DATA:

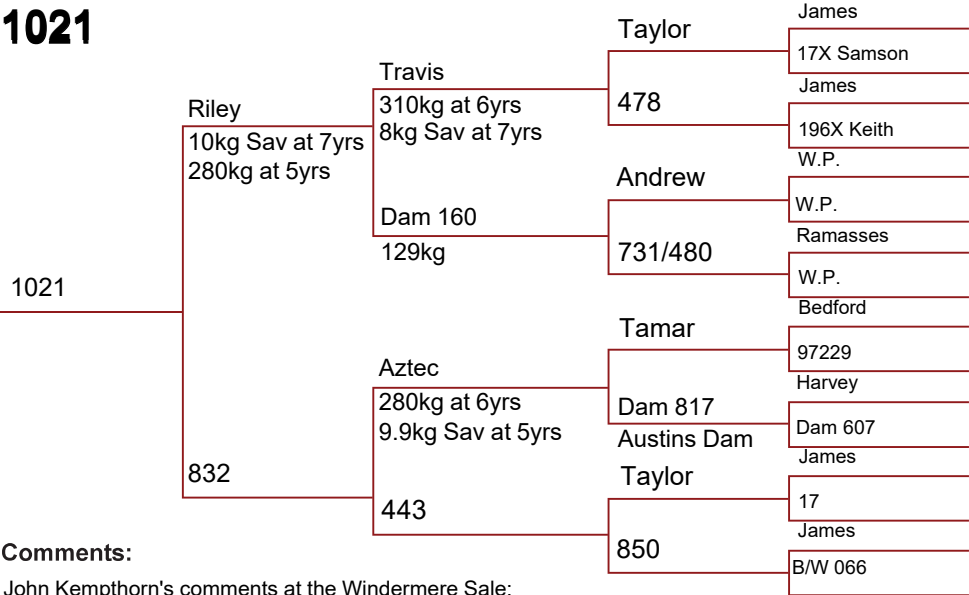
Velvet weights:
4yrs - 10.10kg SA2
5yrs - 11.10kg SA2

Comments:

Beautiful big stag with excellent temperament.

SIRE REFERENCE

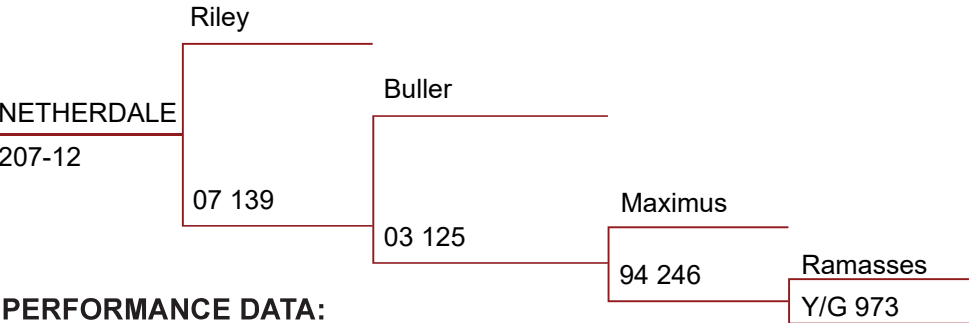
1021



Comments:

John Kempthorn's comments at the Windermere Sale:
"1021 is by far our star Warnham sire Riley, out of a first calving Aztec daughter.
He is growing an extremely strong head with massive beam thickness".
5 year velvet weight: 8.60kg SA2

Netherdale 207-12



PERFORMANCE DATA:

Body Weight

Weaning: 67kg

12 month: 125kg

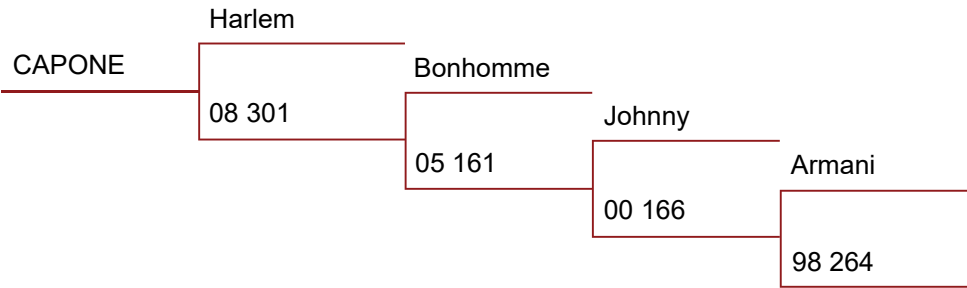
20 month: 161kg

Velvet Weights: 2yr - 5.26kg SA2
3yr - 5.26kg SA2

SIRE REFERENCE



Capone



PERFORMANCE DATA:

Velvet Weights:

- 2yr - 4.08kg SA2
- 3yr - 7.10kg SA2
- 4yr - 8.14kg SA2
- 5yr - 8.80kg SA2

6yr - 11.42kg SA2

Comments:

2nd NZ National 3 year old Velvet Competition 2014

SIRE REFERENCE



Riley (Deceased)

YELLOW /
Orange 77/05

239/03

Maximus Spiker

Maximus

Yellow / Black
222/03

Maiden Hind

Yellow / Blue
37/96

Yellow / Red

144/91

Yellow / Black

161/92

PERFORMANCE DATA:

Body Weight

Weaning: 47kg

14 month: 100kg

2 year old: 158kg

Sale Weight:

Breeding Values

MVW +2.28kg

W12 +1.20kg WWT +0.51kg

Velvet Weights

2yr - 5.00kg SA2

3yr - 5.98kg SA2

7yr - 11.64kg SS

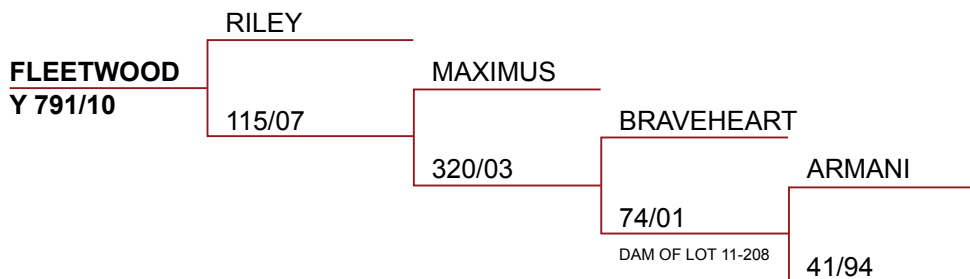
Comments:

Riley had a beautiful head, excellent velvet genetics. Yellow / Blue 37/96 is one of our top hinds. A head with style, weight and quality. Very high breeding values. Winner of the 3 year old Red Section at the NZ National Velvet Competition 2008.

SIRE REFERENCE



Fleetwood



PERFORMANCE DATA:

Body Weight

Weaning: 66kg

14 month: 120kg

2 year old: 187kg

Sale Weight:

Breeding Values

MVW +2.28kg

W12 +1.20kg WWT +0.51kg

Velvet Weights

2yr - 5.44kg SA2

3yr - 7.10kg SA2

5yr - 8.64kg SA2

6yr - 9.15kg SA2

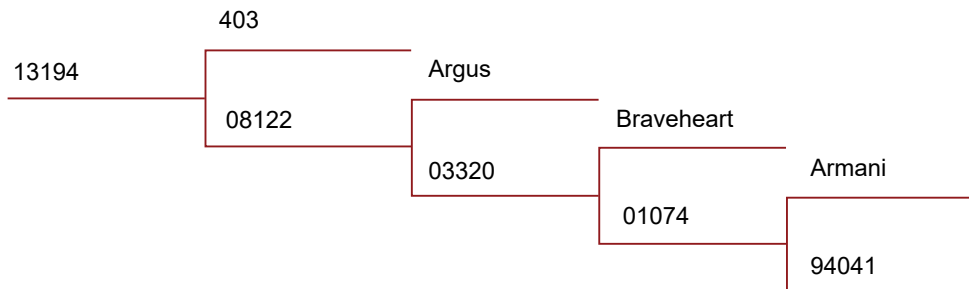
7yr - 11.28kg SA2

Comments:

Excellent velvet weights. Very tidy, top quality head and a good live weight. A top stag with excellent velvet and 12 month breeding values. Top genetics.

SIRE REFERENCE

13194



PERFORMANCE DATA:

Body Weight :

Breeding Values

Comments:

Weaning: 69 kg

MVW +2.59 kg

Big stag with excellent breeding values. Heaviest 24 month stag in his year. Very tidy velvet and good tyne placement.

12 month: 146 kg

W12 +13.64 kg

24 month: 207 kg

Velvet Weights

Sale Weight:

5.44 kg SA2

6.64 kg SA2

Purchaser:

Price:

NATIONAL VELVET ANTLER RESULTS

First NZ Open Section Velvet Competition

Supreme Champion 2002

First NZ Velvet Competition

Supreme Award 2016 3yr Old Section

First NZ Velvet Competition

Supreme Award 2013 3yr Old Section

First NZ Velvet Competition

Supreme Award 2012 5yr Old Section

First NZ Velvet Competition

Supreme Award 2010 3yr Old Section

First NZ Velvet Competition

Supreme Award 2009 5yr Old Section

First NZ Velvet Competition

Supreme Award 2008 3yr Old Section

Second NZ Velvet Competition

2014 3yr Old Section

2011 3yr Old Section

2008 4yr Old Section

2008 5yr Old Section

2007 3yr Old Section

2006 2yr Old Section

2006 3yr Old Section

Third NZ Velvet Competition

2013 3yr Old Section

2012 3yr Old Section

2011 4yr Old Section

2007 3yr Old Section

LOT 1**Netherdale 3 year old Elite Sire Stag****10.12 KG SA2**

Fleetwood

Blue 255/16

09033

11481

Wardlaw

09303

Armani

05211

93078

PERFORMANCE DATA:**Body Weight :****Breeding Values****Comments:****Weaning:** 49 kg

MVW +2.01 kg

Very heavy, very thick, tidy velvet.
Excellent pedigree with Fleetwood as the sire and 09033 as the grand sire who had a very high EBV for velvet. Wardlaw and Armani were both top stud master sires at Netherdale. An amazing head of velvet.

12 month: 116 kg

W12 +1.49 kg

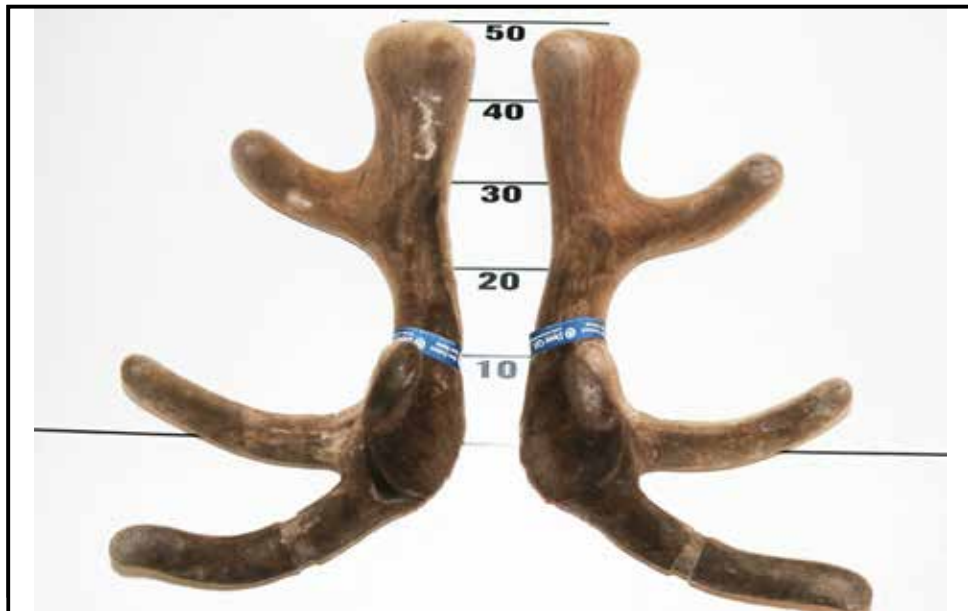
24 month: 178 kg**Velvet Weights****Sale Weight:**

2yr 4.66 kg SA2

3yr 10.12 kg SA2

Purchaser:

Price:

LOT 2**Netherdale 3 year old Elite Sire Stag****8.92 KG SA2**

	13194				
Blue 317/16	403 Son	No1			
	14071		Argus		
		08164		Armani	
			03060		
				00280	

PERFORMANCE DATA:**Body Weight****Weaning:** 51 kg**12 month:** 110 kg**24 month:** 178 kg**Sale Weight:****Breeding Values**

MVW +2.78 kg

W12 +9.04 kg

Velvet Weights

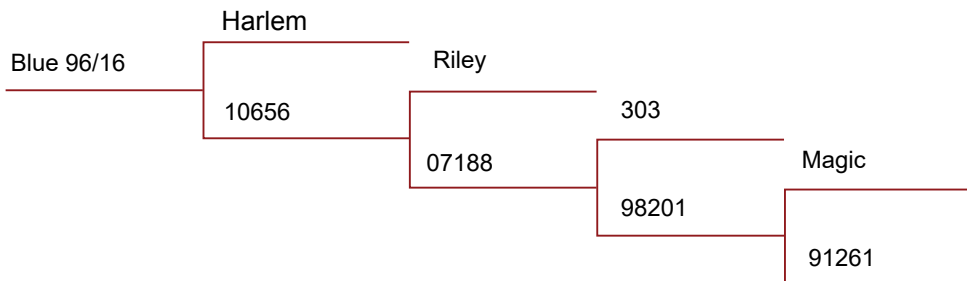
2yr 5.86 kg SA2

3yr 8.92 kg SA2

Comments:

Very nice tidy velvet, great weight with everything in the right place. Sire 13194 is a 403 son who had excellent body weights, 146kg at 12 months and 207kg at 24 months. It is often hard to get weight and tidiness together but you have both in this head. A top young sire.

Purchaser: Price:

LOT 3**Netherdale 3 year old Elite Sire Stag****8.52 KG SA2****PERFORMANCE DATA:****Body Weight****Weaning:** 58 kg**12 month:** 112 kg**24 month:** 172 kg**Sale Weight:****Breeding Values**

MVW +2.38 kg

W12 +2.82 kg

Velvet Weights

2yr 5.30 kg SA2

3yr 8.52 kg SA2

Comments:

At the risk of repeating myself, another very nice tidy, great weight head of velvet with everything in the right place. A Harlem son with a great pedigree going right back to one of our top sires from the past Magic. A top young sire.

Purchaser: Price:

LOT 4

Netherdale 3 year old Elite Sire Stag



9.12 KG SA2

12207

Blue 174/16

Harlem

11137

Hotere

Dam of Sires
in 2019 and
2018 sale

06290

Armani

02281

99145

PERFORMANCE DATA:

Body Weight :

Breeding Values

Comments:

Weaning: 59 kg

MVW +2.44 kg

A son of 12207 who is a son of Riley. 12207 Dams pedigree goes back to Buller, Maximus and Ramasses, all industry heavy weights. Very heavy velvet with turned down brow tynes.

12 month: 108 kg

W12 +6.26 kg

24 month: 162 kg

Velvet Weights

Sale Weight:

2yr 5.20 kg SA2

3yr 9.12 kg SA2

Purchaser:

Price:

LOT 5**Netherdale 3 year old Elite Sire Stag****8.06 KG SA2**

Harlem

Blue 109/16

403

12039

Maximus

03190

Braveheart

99085

96387

PERFORMANCE DATA:**Body Weight****Weaning:** 60 kg**12 month:** 132 kg**24 month:** 197 kg**Sale Weight:****Breeding Values**

MVW +1.93 kg

W12 +7.61 kg

Velvet Weights

2yr 4.56 kg SA2

3yr 8.06 kg SA2

Comments:

A very tidy head of velvet, strong brow, bez and trez tynes. Good beam and tops. Excellent pedigree with Harlem, 403, Maximus and Braveheart. Very good liveweights to go along with a 8kg velvet weight.

Purchaser: Price:

LOT 6**Netherdale 3 year old Elite Sire Stag****8.32 KG SA2 / SA1**

Henshaw

Blue 234/16

Harlem

13187

Hotere

08371

Argus

04261

99363

PERFORMANCE DATA:**Body Weight****Weaning:** 61 kg**12 month:** 130 kg**24 month:** 198 kg**Sale Weight:****Breeding Values**

MVW +2.59 kg

W12 +8.36 kg

Velvet Weights

2yr 5.32 kg SA2

3yr 8.32 kg SA2/SA1

Comments:

234/16 as a 2 year old had brow, bez and trez tynes both sides but for some reason dropped a bez tyne this year. Very heavy velvet with excellent velvet BV and W12 BV. Big stag.

Purchaser:

Price:

LOT 7**Netherdale 3 year old Elite Sire Stag****7.22 KG SA2**

Capone

Blue 171/16

Hotere

07334

Maximus

03249

G146

98051

YB259

PERFORMANCE DATA:**Body Weight****Weaning:** 58 kg**12 month:** 123 kg**24 month:** 195 kg**Sale Weight:****Breeding Values**

MVW +2.21 kg

W12 +4.26 kg

Velvet Weights

2yr 4.70 kg SA2

3yr 7.22 kg SA2

Comments:

Capone son, tidy velvet with very good strength and tyne placement. Nice quiet stag that takes your eye in the paddock.

Purchaser:

Price:

LOT 8**Netherdale 3 year old Elite Sire Stag****7.62 KG SA2**

Henshaw

Blue 107/16

Harlem

13034

05333

07549

Argus

05439

GG Dam
Lot 9 2019,
Lot 10 2010

02272

Top Dam

PERFORMANCE DATA:**Body Weight :****Breeding Values****Comments:****Weaning:** 64 kg

MVW +2.53 kg

Big Henshaw son, very good EBV for both velvet and 12mth liveweight.

12 month: 129 kg

W12 +9.08 kg

Background of sale sires in the past.

24 month: 193 kg**Velvet Weights**

Very tidy velvet with excellent tyne placement and length. Nice sire stag.

Sale Weight:

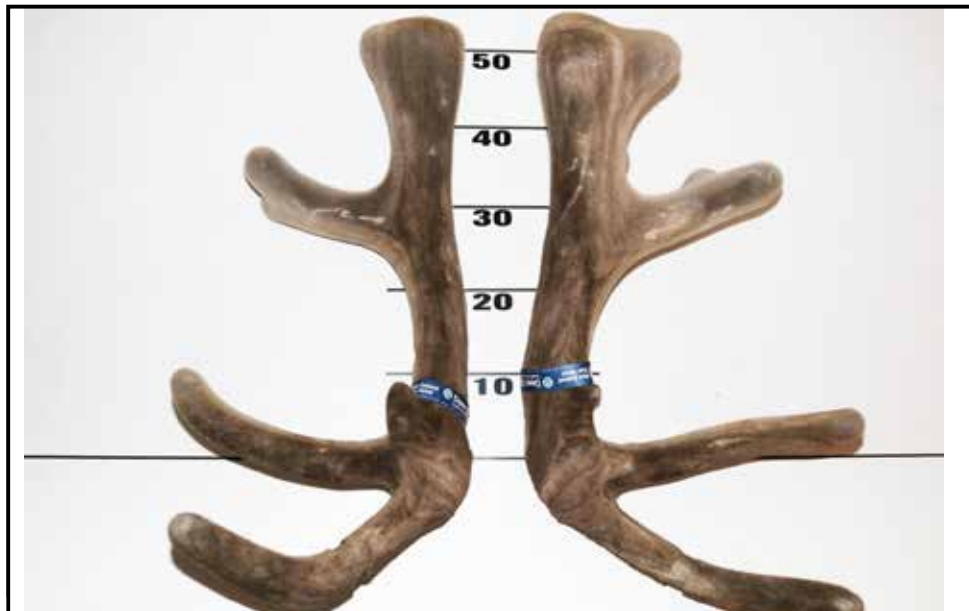
2yr 5.12 kg SA2

Cut to make to catalogue.

3yr 7.62 kg SA2

Purchaser:

Price:

LOT 9**Netherdale 3 year old Elite Sire Stag****9.28 KG SA2**

Fleetwood

Blue 134/16

Duke

12009

Highgrove

06222

Maximus

01102

93146

PERFORMANCE DATA:**Body Weight****Weaning:** 52 kg**12 month:** 109 kg**24 month:** 158 kg**Sale Weight:****Breeding Values**

MVW +2.04 kg

W12 +2.23 kg

Velvet Weights

2yr 4.60 kg SA2

3yr 9.28 kg SA2

Comments:

Solid velvet with a throw back on one side. Tyne placement and beam length are very good. Very good pedigree with Duke in the background who cut 8.40 kg as a 3 year old in 2011 and sold as Lot one to Blue Willow for \$45,000 in 2012.

Purchaser: Price:

LOT 10**Netherdale 3 year old Elite Sire Stag****7.90 KG SA2**

Capone

Blue 195/16

Wardlaw

09303

Armani

05211

Harveyson

01141

98006

PERFORMANCE DATA:**Body Weight****Weaning:** 61 kg**12 month:** 113 kg**24 month:** 171 kg**Sale Weight:****Breeding Values**

MVW +2.29 kg

W12 +2.46 kg

Velvet Weights

2yr 4.98 kg SA2

3yr 7.90 kg SA2

Comments:

Good velvet weight at just under the 8kg. The brow and bez tynes on the left side are the same as his two year head. Whether the velvet continues to do this I don't know but its still a pretty good head all the same.

Purchaser:

Price:

LOT 11**Netherdale 3 year old Elite Sire Stag****11.28 KG SA2**

12207

Blue 106/16

12284

Bonhomme

08082

10864

Argus

Dam of
Lot 1 2017,
lot 4 2018

08007

00217

PERFORMANCE DATA:**Body Weight****Weaning:** 54 kg**12 month:** 113 kg**24 month:** 160 kg**Sale Weight:****Breeding Values**

MVW +3.23 kg

W12 +2.00 kg

Velvet Weights

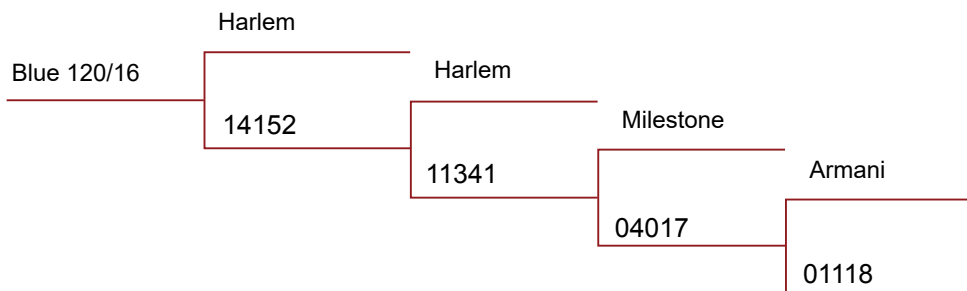
2yr 6.28 kg SA2

3yr 11.28 kg SA

Comments:

Wow! Want some weight? This stag has got plenty of extra tynes at the trez. Clean bottoms with a big beam. What he will do in future is anyone's guess. Excellent background and breeding values

Purchaser: Price:

LOT 12**Netherdale 3 year old Elite Sire Stag****PERFORMANCE DATA:****Body Weight****Weaning:** 57 kg**12 month:** 113 kg**24 month:** 178 kg**Sale Weight:****Breeding Values**

MVW +2.48 kg

W12 +4.54 kg

Velvet Weights

2yr 5.14 kg SA2

3yr kg SA2

Comments:

This stag has yet to be cut. A Harlem son from a Harlem daughter. Very good EBV for velvet weight. A photo will be posted on our Website as soon as the velvet is cut.

Purchaser: Price:

LOT 13

Netherdale 3 year old Sire Stag



7.46 KG SA2

Harlem

Blue 132/16

Riley

10794

Maximus

Dam of Lot 6
2017

04189

Squire

97083

93078

Lot 1 2008

PERFORMANCE DATA:

Body Weight

Weaning: 56 kg

12 month: 112 kg

24 month: 168 kg

Sale Weight:

Breeding Values

MVW +2.23 kg

W12 +3.33 kg

Velvet Weights

2yr 4.94 kg SA2

3yr 7.46 kg SA2

Comments:

Very nice tidy velvet with excellent tine placement. Another Harlem son with an excellent background going all the way back to Squire, Maximus and Riley.

Purchaser: Price:

LOT 14

Netherdale 3 year old Elite Sire Stag



7.26 KG SA2

Harlem

Blue 74/16

Gatling

12105

08096

Argus

03238

Maximus

Y612

Top Hind

PERFORMANCE DATA:

Body Weight

Weaning: 57 kg

12 month: 113 kg

24 month: 172 kg

Sale Weight:

Breeding Values

MVW +2.25 kg

W12 +6.28 kg

Velvet Weights

2yr 5.20 kg SA2

3yr 7.26 kg SA2

Comments:

Tidy velvet with excellent length and tyne placement. Y612 has had a number of daughters, granddaughters and great granddaughters produce sale sires in the past.

Purchaser: Price:

LOT 15**Netherdale 3 year old Elite Sire Stag****7.00 KG SA2**

Harlem

Blue 191/16

Riley

10653

Argus

07421

Armani

03171

8046

PERFORMANCE DATA:**Body Weight :****Breeding Values****Comments:****Weaning:** 52 kg

MVW +2.05 kg

Nice tidy velvet, has a short bez on one side but not as a two year old. Another Harlem son with our top sires from the past in the background.

12 month: 120 kg

W12 +1.16 kg

24 month: 183 kg**Velvet Weights****Sale Weight:**

2yr 4.64 kg SA2

3yr 7.00 kg SA2

Purchaser:

Price:

LOT 16**Netherdale 3 year old Sire Stag****7.40 KG SA2**

Henshaw

Blue 203/16

403

13181

Argus

05364

Magic

98247

93101

PERFORMANCE DATA:**Body Weight :****Breeding Values****Comments:****Weaning:** 53 kg

MVW +2.64 kg

Short thick velvet with a double trez on each side. Interesting background with 403 as the grand sire who had a similar head at the same age. 403 went on to grow a massive head when grown out for the trophy market.

12 month: 108 kg

W12 +4.88 kg

24 month: 172 kg**Velvet Weights****Sale Weight:**

2yr 5.56 kg SA2

3yr 7.40 kg SA2

Purchaser:

Price:

LOT 17**Netherdale 3 year old Elite Sire Stag****6.70 kg SA2/SA2LT**

Harlem

Blue 148/16

Riley

09240

303

06239

Banks

03184

96625

PERFORMANCE DATA:**Body Weight :****Weaning:** 65 kg**12 month:** 103 kg**24 month:** 188 kg**Sale Weight:****Breeding Values**

MVW + kg

W12 +4.54 kg

Velvet Weights

2yr 3.84 kg A2 cut early

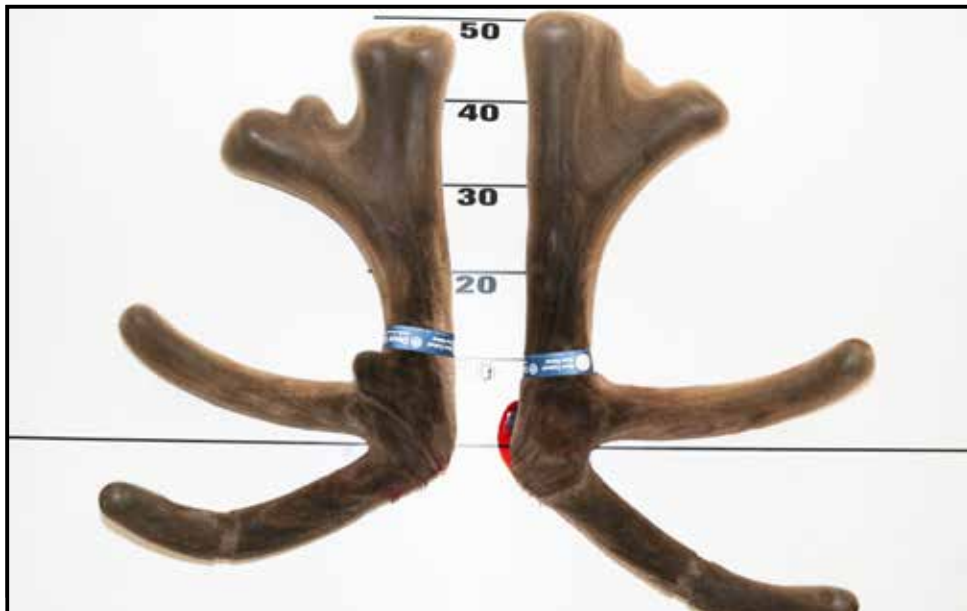
3yr 6.70 kg SA2/SA2LT

Comments:

Nice tidy velvet, cut a little late. Tyne length and placement very good. No two year velvet EBV as the dam pedigree information was late. 3year old velvet EBV will be available on line. Two year old velvet was cut very early.

Purchaser:

Price:

LOT 18**Netherdale 3 year old Elite Sire Stag****9.92 KG SA2**

Capone

Blue 48/16

Hagley

09102

Maximus

03260

91144

99322

97321

PERFORMANCE DATA:**Body Weight :****Breeding Values****Comments:****Weaning:** 60 kg

MVW +4.18 kg

Massive head and cut early to make the catalogue. Huge beam with big tops, slight palmation on the left side. A two year old velvet weight of 7.76kg and a velvet EBV of +4.18kg. Overall a big head on a big stag.

12 month: 120 kg

W12 +3.32 kg

24 month: 188 kg**Velvet Weights****Sale Weight:**

2yr 7.76 kg SA2

3yr 9.92kg SA2

Purchaser:

Price:

LOT 19

Netherdale 3 year old Elite Sire Stag



6.70 KG SA2

12207

Blue 220/16

13444

Stud Hind
retagged

PERFORMANCE DATA:

Body Weight :

Breeding Values

Comments:

Weaning: 59 kg

MVW +1.32 kg

Very nice tidy velvet. Excellent tyne placement and length. Dam had lost both tags and has replacements.

12 month: 118 kg

W12 +3.57 kg

24 month: 175 kg

Velvet Weights

Sale Weight:

2yr 4.26 kg SA2

3yr 6.70 kg SA2

Purchaser:

Price:

LOT 20**Netherdale 3 year old Elite Sire Stag****6.90 KG SA2**

Harlem

Blue 193/16

Riley

09230

Dam of Lot 1
2019 sale

03211

Maximus

99175

Squire

93078

PERFORMANCE DATA:**Body Weight :****Breeding Values****Comments:****Weaning:** 54 kg

MVW +2.02 kg

This stag has the exact same pedigree as lot one last year. Tidy velvet with good tyne placement and strong trez. Worth a punt, you never know what he may leave.

12 month: 113 kg

W12 +1.68 kg

24 month: 180 kg**Velvet Weights****Sale Weight:**

2yr 4.48 kg SA2

3yr 6.90 kg SA2

Purchaser:

Price:

LOT 21**Netherdale 3 year old Elite Sire Stag****7.06 KG SA2**

13194

Blue 343/16

Quercus

14285

Banks

Maiden Hind

SAR061088

Lancelot

98067

Rose

PERFORMANCE DATA:**Body Weight :****Breeding Values****Comments:****Weaning:** 51 kg

MVW +1.37 kg

Interesting pedigree with some top industry sires going back to Banks and Lancelot. Tidy velvet, very well balanced with nice tight brows and bez.

12 month: 111 kg

W12 +4.18 kg

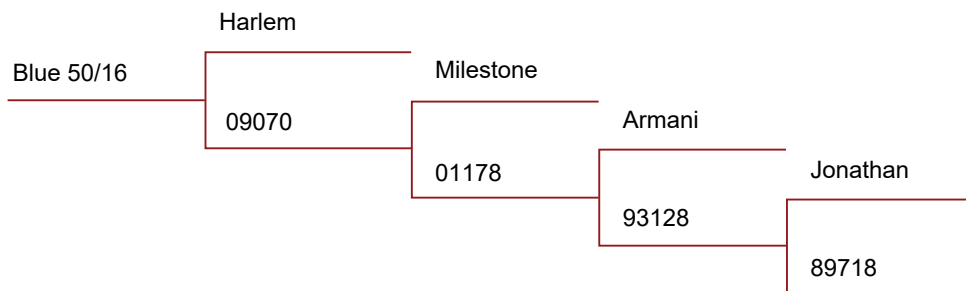
24 month: 168 kg**Velvet Weights****Sale Weight:**

2yr 4.48 kg SA2

3yr 7.06 kg SA2

Purchaser:

Price:

LOT 22**Netherdale 3 year old Elite Sire Stag****6.82 KG SA2****PERFORMANCE DATA:****Body Weight :****Weaning:** 51 kg**12 month:** 109 kg**24 month:** 170 kg**Sale Weight:****Breeding Values**

MVW +2.01 kg

W12 +1.68 kg

Velvet Weights

2yr 4.14 kg SA2

3yr 6.82 kg SA2

Comments:

Another Harlem stag. Very tidy balanced velvet with everything in the right place. Good strength in all tynes. Tidy pedigree going back to Jonathan.

Purchaser: Price:

LOT 23**Netherdale 3 year old Elite Sire Stag****7.80 KG SA2**

Henshaw

Blue 92/16

Riley

13270

Wardlaw

10618

Hotere

07386

194 Rodway

PERFORMANCE DATA:**Body Weight :****Breeding Values****Comments:****Weaning:** 59 kg

MVW +2.10 kg

92/16 has a very heavy even head with good tyne placement and strength. The right side is slightly palmated above the trez tyne. Good breeding values for both velvet and liveweight.

12 month: 107 kg

W12 +6.30 kg

24 month: 170 kg**Velvet Weights****Sale Weight:**

2yr 4.62 kg SA2

3yr 7.80 kg SA2

Purchaser:

Price:

LOT 24

Netherdale 3 year old Elite Sire Stag



7.00 KG SA2

Riley

Blue 345/16

No DNA Match

14125

Maiden Hind

No DNA Match

PERFORMANCE DATA:

Body Weight :

Breeding Values

Comments:

Weaning: 52 kg

MVW +1.97 kg

Tidy balanced velvet head, double trez on one side. Unable to get a DNA Match for 14125. Good two year old velvet weight.

12 month: 118 kg

W12 - 0.13 kg

24 month: 173 kg

Velvet Weights

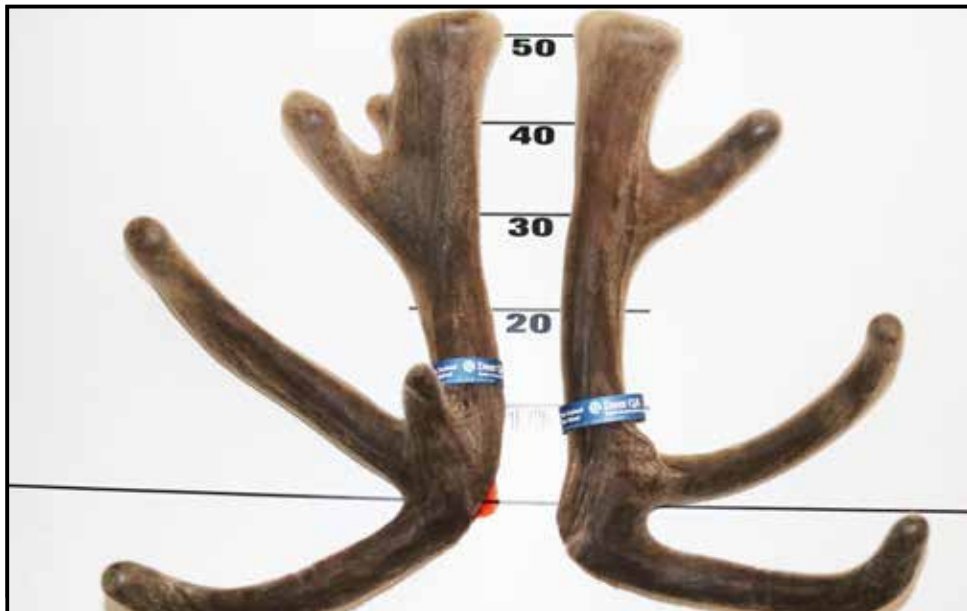
Sale Weight:

2yr 5.12 kg SA2

3yr 7.00 kg SA2

Purchaser:

Price:

LOT 25**Netherdale 3 year old Elite Sire Stag****8.76 KG SA2**

Capone

Blue 206/16

Wardlaw

10752

Argus

Dam of Lot 5
2017

07108

Squire

97085

90125

Lot 4 2004,
Lot 6 2006**PERFORMANCE DATA:****Body Weight****Weaning:** 63 kg**12 month:** 123 kg**24 month:** 170 kg**Sale Weight:****Breeding Values**

MVW +2.34 kg

W12 +2.39 kg

Velvet Weights

2yr 4.90 kg SA2

3yr 8.76 kg SA2

Comments:

206/16 had very tidy velvet as a two year old , with good length and strong brow, bezs and trezs. His 3 year old is long but good strength in the beam. Excellent pedigree with a number of sale sires produced in the past. Velvet was cut to make the catalogue.

Purchaser:

Price:

LOT 26**Netherdale 3 year old Elite Sire Stag**

Henshaw

Blue 173/16

1021

13316

Milestone

11341

04017

Armani

01118

PERFORMANCE DATA:**Body Weight****Weaning:** 49 kg**12 month:** 100 kg**24 month:** 150 kg**Sale Weight:****Breeding Values**

MVW +4.29 kg

W12 +0.81 kg

Velvet Weights

2yr 7.42 kg SA2

3yr kg SA2

Comments:

Very heavy velvet as a two year old. 173/16 had the highest velvet EBV at two years @ +4.29kg. Uncut at the time of cataloguing. Velvet photo will be posted on line with updated velvet EBV.

Purchaser:

Price:

LOT 27**Netherdale 3 year old Elite Sire Stag****6.62 KG SA2**

Harlem

Blue 52/16

Argus

09428

Hotere

07331

Maximus

GD of Lot 5
2018, Lot 2
2019

03238

Y612

Top Hind

PERFORMANCE DATA:**Body Weight****Weaning:** 63 kg**12 month:** 120 kg**24 month:** 182 kg**Sale Weight:****Breeding Values**

MVW +1.52 kg

W12 +6.25 kg

Velvet Weights

2yr 4.12 kg SA2

3yr 6.62 kg SA2

Comments:

Nice quiet stag. A very balanced head with good tyne length and strength. Attractive dark velvet, cut nicely.

Purchaser:

Price:

LOT 28**Netherdale 3 year old Elite Sire Stag**

Capone

Blue 307/16

Wardlaw

10661

Hotere

07439

Maximus

01102

93146

PERFORMANCE DATA:**Body Weight****Weaning:** 53 kg**12 month:** 122 kg**24 month:** 173 kg**Sale Weight:****Breeding Values**

MVW +3.17 kg

W12 +1.48 kg

Velvet Weights

2yr 6.04 kg SA2

3yr kg SA2

Comments:

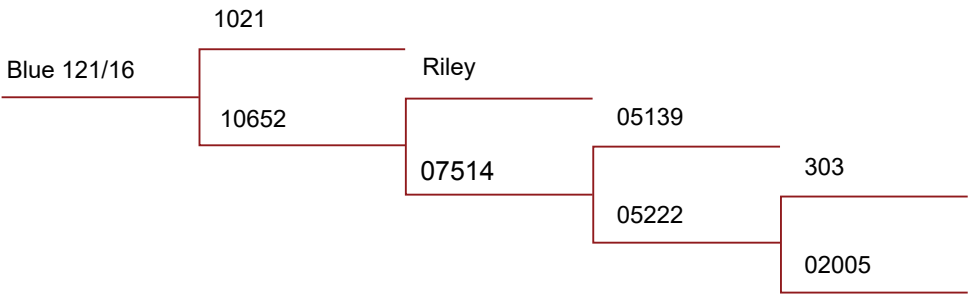
Nice quiet stag. Good two year velvet weight and EBV. Good length. Uncut a time of cataloguing. A nice Capone son.

Purchaser:

Price:

LOT 29

Netherdale 3 year old Elite Sire Stag



PERFORMANCE DATA:

Body Weight		Breeding Values	Comments:
Weaning:	42 kg	MVW +2.12 kg	A 1021 son with a quality pedigree. Nice tidy velvet, uncut at cataloguing but looks the part.
12 month:	89 kg	W12 -7.79 kg	
24 month:	146 kg	Velvet Weights	
Sale Weight:	2yr	4.94 kg SA2	
	3yr	kg SA2	

Purchaser:
Price:

LOT**Netherdale Semen****Semen from "BRONX" - Son of Harlem**

Lot 28A	3 Straw
Lot 28B	3 Straw
Lot 28C	3 Straw
Lot 28D	3 Straw
Lot 28E	3 Straw

Purchaser: Price:

LOT**Netherdale Semen****Semen from "HENSHAW"**

Lot 29A	3	Straws
Lot 29B	3	Straws
Lot 29C	3	Straws

Purchaser: Price:

**Downlands
Deer**

*Proud to be the preferred transporter of
Netherdale Elite Red Deer*

- Quality assured drivers to DINZ QA Programme
- QA DINZ approved purpose built crates - deer only
 - Rubber matting and sprinkler system in crates
- Lairage facilities (overnight) available - Geraldine
 - NZ Trophy & Sire Stag Specialists

For all enquiries contact:

KRIS ORANGE

Phone: 0800 163 013

Email: kris@downlandsdeer.co.nz

LOT 1

13 month Recorded Hind

Bronx

Red 18143

No1

14051

08150

10809

08170

Body Weight

Weaning: 56 kg

12 month: 100 kg

Mature velvet weight EBV: + 2.07 kg

Sale Weight:

Purchaser Price:

LOT 2

13 month Recorded Hind

Bronx

Red 18140

No DNA Match

14095

No DNA Match

Body Weight

Weaning: 56 kg

12 month: 93 kg

Mature velvet weight EBV: + 1.72 kg

Sale Weight:

Purchaser Price:

LOT 3

13 month Recorded Hind

Bronx

Red 18170

403

13188

No DNA Match

Body Weight

Weaning: 57 kg

12 month: 91 kg

Mature velvet weight EBV: + 2.04 kg

Sale Weight:

Purchaser Price:

LOT 4

13 month Recorded Hind

Red 18206	Bronx	
	15220	Harlem
		10223
	12100	
Body Weight		Arawata Hind
Weaning: 42 kg		10106
12 month: 85 kg		
Mature velvet weight EBV: + 2.01 kg		
Sale Weight:		

Purchaser Price:

LOT 5

13 month Recorded Hind

Red 18205	Bronx	
	14227	Fleetwood
		Argus
	10671	
Body Weight		99298
Weaning: 51 kg		
12 month: 84 kg		
Mature velvet weight EBV: + 2.09 kg		
Sale Weight:		

Purchaser Price:

LOT 6

13 month Recorded Hind

Red 18145	Bronx	
	13270	Riley
		Wardlaw
	10618	
Body Weight		07386
Weaning: 46 kg		
12 month: 83 kg		
Mature velvet weight EBV: + 2.34 kg		
Sale Weight:		

Purchaser Price:

LOT 7

13 month Recorded Hind

Bronx

Red 18116

Harlem

14050

No DNA Match

Body Weight

Weaning: 46 kg

12 month: 81 kg

Mature velvet weight EBV: + 1.67 kg kg

Sale Weight:

Purchaser Price:

LOT 8

13 month Recorded Hind

Bronx

Red 18193

Buller

14074

09409

Argus

07439

Body Weight

Weaning: 47 kg

12 month: 80 kg

Mature velvet weight EBV: + 2.18 kg

Sale Weight:

Purchaser Price:

LOT 9

13 month Recorded Hind

Bronx

Red 18126

Buller

14043

09093

Riley

03118

Body Weight

Weaning: 49 kg

12 month: 80 kg

Mature velvet weight EBV: + 2.22 kg

Sale Weight:

Purchaser Price:

LOT 10

13 month Recorded Hind

	Harlem		
Red 18181		403	
	14039		05333
		07473	
			05233

Body Weight

Weaning: 56 kg

12 month: 97 kg

Mature velvet weight EBV: + 1.52 kg kg

Sale Weight:

Purchaser Price:

LOT 11

13 month Recorded Hind

	Harlem		
Red 18123		No1	
	13398		Harlem
		11292	
			00296

Body Weight

Weaning: 57 kg

12 month: 93 kg

Mature velvet weight EBV: + 1.44 kg

Sale Weight:

Purchaser Price:

LOT 12

13 month Recorded Hind

	Harlem		
Red 18158		403	
	14010		Argus
		07199	
			98151

Body Weight

Weaning: 56 kg

12 month: 88 kg

Mature velvet weight EBV: + 1.56 kg

Sale Weight:

Purchaser Price:

LOT 13

13 month Recorded Hind

	Harlem		
Red 18135		Wardlaw	
	13100		Riley
		09240	
			06239

Body Weight

Weaning: 56 kg

12 month: 87 kg

Mature velvet weight EBV: + 1.69 kg

Sale Weight:

Purchaser Price:

LOT 14

13 month Recorded Hind

	Capone		
Red 18025		Wardlaw	
	11258		Argus
		08411	
			02070

Body Weight

Weaning: 55 kg

12 month: 98 kg

Mature velvet weight EBV: + 1.63 kg

Sale Weight:

Purchaser Price:

LOT 15

13 month Recorded Hind

	Capone		
Red 18088		Riley	
	11263		Wardlaw
		08239	
			98220

Body Weight

Weaning: 54 kg

12 month: 96 kg

Mature velvet weight EBV: + 1.89 kg

Sale Weight:

Purchaser Price:

LOT 16

13 month Recorded Hind

Red 18067	Capone		
		Wardlaw	
	08239		Magic
		09220	
			98589

Body Weight

Weaning: 55 kg

12 month: 92 kg

Mature velvet weight EBV: + 1.73 kg

Sale Weight:

Purchaser Price:

LOT 17

13 month Recorded Hind

Red 18080	Capone		
		Highgrove	
	06185	Charles Rupert son	
		999438	

Body Weight

Weaning: 49 kg

12 month: 91 kg

Mature velvet weight EBV: + 1.17 kg

Sale Weight:

Purchaser Price:

LOT 18

13 month Recorded Hind

Red 18045	Capone		
		Riley	
	11253		Hotere
		07391	
			01290

Body Weight

Weaning: 45 kg

12 month: 91 kg

Mature velvet weight EBV: + 1.84 kg

Sale Weight:

Purchaser Price:

LOT 19

13 month Recorded Hind

Capone

Red 18007

Wardlaw

11213

08202

Bohomme

05198

Body Weight

Weaning: 48 kg

12 month: 90 kg

Mature velvet weight EBV: + 2.00 kg

Sale Weight:

Purchaser: Price:

LOT 20

13 month Recorded Hind

Capone

Red 18069

Marley

11332

Banks son

Maximus

05017

00244

Body Weight

Weaning: 54 kg

12 month: 87 kg

Mature velvet weight EBV: + 2.00 kg

Sale Weight:

Purchaser: Price:

LOT 21

13 month Recorded Hind

Capone

Red 18079

09258

11438

09264

Wardlaw

05245

Body Weight

Weaning: 45 kg

12 month: 86 kg

Mature velvet weight EBV: + 1.82 kg

Sale Weight:

Purchaser: Price:

LOT 22

13 month Recorded Hind

Capone

Red 18072

Milestone

11320

05324

Argus

02188

Body Weight

Weaning: 47 kg

12 month: 85 kg

Mature velvet weight EBV: + 1.73 kg

Sale Weight:

Purchaser Price:

LOT 23

13 month Recorded Hind

Capone

Red 18097

09254

11402

09396

Argus

07334

Body Weight

Weaning: 49 kg

12 month: 85 kg

Mature velvet weight EBV: + 2.07 kg

Sale Weight:

Purchaser Price:

LOT 24

13 month Recorded Hind

Capone

Red 18062

Wardlaw

09101

05294

Armani

01187

Body Weight

Weaning: 41 kg

12 month: 84 kg

Mature velvet weight EBV: + 1.81 kg

Sale Weight:

Purchaser Price:

LOT 25

13 month Recorded Hind

Henshaw

Red 18084

Harlem

13215

Highgrove

08089

04024

Body Weight

Weaning: 54 kg

12 month: 102 kg

Mature velvet weight EBV: + 1.97 kg

Sale Weight:

Purchaser Price:

LOT 26

13 month Recorded Hind

Henshaw

Red 18085

Harlem

13201

Bonhomme

08301

05161

Body Weight

Weaning: 59 kg

12 month: 101 kg

Mature velvet weight EBV: + 2.15 kg

Sale Weight:

Purchaser Price:

LOT 27

13 month Recorded Hind

Henshaw

Red 18120

Harlem

13114

Argus

09379

07074

Body Weight

Weaning: 56 kg

12 month: 96 kg

Mature velvet weight EBV: + 1.95 kg

Sale Weight:

Purchaser Price:

LOT 28

13 month Recorded Hind

Henshaw

Red 18022

403

12258

Riley

09221

06175

Body Weight

Weaning: 55 kg

12 month: 96 kg

Mature velvet weight EBV: + 2.09 kg

Sale Weight:

Purchaser Price:

LOT 29

13 month Recorded Hind

Henshaw

Red 18019

Harlem

13117

No DNA Match

Body Weight

Weaning: 52 kg

12 month: 93 kg

Mature velvet weight EBV: + 1.81 kg

Sale Weight:

Purchaser Price:

LOT 30

13 month Recorded Hind

Henshaw

Red 18032

Hagley

12137

Hotere

08105

02161

Body Weight

Weaning: 55 kg

12 month: 93 kg

Mature velvet weight EBV: + 2.01 kg

Sale Weight:

Purchaser Price:

LOT 31**13 month Recorded Hind**

Henshaw

Red 18030

Riley

12192

07411

Argus

01379

Body Weight

Weaning: 49 kg

12 month: 92 kg

Mature velvet weight EBV: + 2.01 kg

Sale Weight:

Purchaser Price:

LOT 32**13 month Recorded Hind**

Henshaw

Red 18028

Hagley

12187

06290

Hotere

02281

Body Weight

Weaning: 40 kg

12 month: 90 kg

Mature velvet weight EBV: + 1.99 kg

Sale Weight:

Purchaser Price:

LOT 33**13 month Recorded Hind**

Henshaw

Red 18057

Harlem

13119

07108

Argus

97085

Body Weight

Weaning: 47 kg

12 month: 89 kg

Mature velvet weight EBV: + 2.10 kg

Sale Weight:

Purchaser Price:

LOT 34

13 month Recorded Hind

Henshaw

Red 18047

Harlem

12089

04125

Eastern

Eastern

Body Weight

Weaning: 48 kg

12 month: 88 kg

Mature velvet weight EBV: + 1.66 kg

Sale Weight:

Purchaser Price:

LOT 35

13 month Recorded Hind

Henshaw

Red 18093

Harlem

13219

07015

Buller

03201

Body Weight

Weaning: 50 kg

12 month: 86 kg

Mature velvet weight EBV: + 2.26 kg

Sale Weight:

Purchaser Price:

LOT 36

13 month Recorded Hind

Henshaw

Red 18068

Harlem

13284

06095

303

03197

Body Weight

Weaning: 48 kg

12 month: 83 kg

Mature velvet weight EBV: + 2.11 kg

Sale Weight:

Purchaser Price:

LOT 37

13 month Recorded Hind

Henshaw

Red 18184

Milestone

09064

01233

Maximus

93078

Body Weight

Weaning: 54 kg

12 month: 84 kg

Mature velvet weight EBV: + 2.07 kg

Sale Weight:

Purchaser Price:

LOT 38

13 month Recorded Hind

Henshaw

Red 18059

403

12251

09083

Riley

06011

Body Weight

Weaning: 48 kg

12 month: 84 kg

Mature velvet weight EBV: + 2.09 kg

Sale Weight:

Purchaser Price:

LOT 39

13 month Recorded Hind

12207

Red 18271

Harlem

16018 Maiden Hind

11198

Riley

08072

Body Weight

Weaning: 48 kg

12 month: 87 kg

Mature velvet weight EBV: + 1.66 kg

Sale Weight:

Purchaser Price:

LOT 40

13 month Recorded Hind

Fleetwood

Red 18278

Capone

16147

10687

Wardlaw

07137

Body Weight

Weaning: 50 kg

12 month: 86 kg

Mature velvet weight EBV: + 1.58 kg

Sale Weight:

Purchaser Price:

LOT 41

13 month Recorded Hind

12207

Red 18266

Henshaw

16250

13061

Harlem

09135

Body Weight

Weaning: 49 kg

12 month: 85 kg

Mature velvet weight EBV: + 1.99 kg

Sale Weight:

Purchaser Price:

LOT 42

13 month Recorded Hind

Fleetwood

Red 18272

Totara

16036

12329

Wardlaw

10554

Body Weight

Weaning: 51 kg

12 month: 84 kg

Mature velvet weight EBV: + 1.99 kg

Sale Weight:

Purchaser Price:



XCELL

**BREEDING AND
VETERINARY SERVICES**

SPECIALISTS IN DEER REPRODUCTION

**‘YOUR SUCCESS
IS OUR BUSINESS’**

**SUPPORTING THE
DEER INDUSTRY SINCE 1996**

Xcell Breeding and Veterinary Services

143 Rangiora Woodend Road, Woodend 7610,

North Canterbury **ph** 03 312 2191

www.xcell.co.nz

BUYER'S INSTRUCTION SLIP

(No verbal instructions can be accepted)

Name:

Address:

.....

.....

Lot Purchased:

.....

Total Number:

Consign to:.....

.....

Account to:.....

.....

Delivered to:

.....

Insure for (state period): Months.

NAIT #:

Signature of buyer:

2YR VELVET STAGS

Approx 70 x 2yr old Velvet Stags (in Lots of 10) will be auctioned
immediately after the 13mth Hinds

Velvet weights 3.00kg + SA2 or A Grade

Velvet photos will be displayed on the website prior to the Sale

Photos will also be displayed on sale day

For further information see www.netherdale.co.nz or contact David on 027 433 1383

Lot 1	Price _____	Purchaser _____
Lot 2	Price _____	Purchaser _____
Lot 3	Price _____	Purchaser _____
Lot 4	Price _____	Purchaser _____
Lot 5	Price _____	Purchaser _____
Lot 6	Price _____	Purchaser _____
Lot 7	Price _____	Purchaser _____
Lot 8	Price _____	Purchaser _____
Lot 9	Price _____	Purchaser _____
Lot 10	Price _____	Purchaser _____

Notes _____

Thank you for attending the

Netherdale Red Deer Sale

Wishing you all the best for 2020

David & Lynley Stevens



All Enquiries to:


David Stevens 0274 331 383 or **Ben Beadle** 0277 281 052

461 Glenure Balfour Road, R D 6, Gore, Southland 9776.

Cell: 0274 331 383

E-mail: netherdale@xtra.co.nz

Website: www.netherdale.co.nz

 [Netherdale-Red-Deer-Stud](https://www.facebook.com/Netherdale-Red-Deer-Stud)

www.netherdale.co.nz