



WILKINS FARMING CO  
— BREEDING FOR THE FUTURE —

# NORTH ISLAND RED STAG 2019 SALE

— VENISON AND BUCKLERS —



• SHOWN AT 4 YEARS •  
**CARDRONA**  
• FULL PROFILE ON WEBSITE •

**13 DECEMBER 2019 3PM**  
GEORGE AND LAURA WILLIAMS, TE MAIRE  
678 MATHESON ROAD, HAWKE'S BAY



**WILKINS FARMING CO**  
— BREEDING FOR THE FUTURE —

## OUR MISSION

Our aim is to produce a high value animal from an efficient maternal weight hind through the use of the latest technology and best genetics available.



*Michael Wilkins*

**Michael Wilkins**

On behalf of the team at Wilkins Farming Co



WILKINS FARMING CO  
— BREEDING FOR THE FUTURE —

# Contents

<b>Mission Statement</b> .....	<b>2</b>
<b>Welcome</b> .....	<b>4</b>
<b>History &amp; Vision</b> .....	<b>5</b>
<b>Herd Sires</b> .....	<b>9-16</b>
Maternal Sale Lot Index .....	<b>18</b>
European & Eastern Sale Lot Index .....	<b>19</b>
Photos of Sale Lot .....	<b>20</b>
Sale Lots .....	<b>21-36</b>
<b>Notable Sires of Dams</b> .....	<b>38-41</b>
<b>Future Sires</b> .....	<b>44-48</b>
<b>Management Tools</b>	
Definitions and DEERSELECT .....	<b>50</b>
Scanning for Meat Yield .....	<b>52</b>
Why Maternal? .....	<b>53</b>
Why Eastern? .....	<b>54</b>
Why European? .....	<b>55</b>
<b>Health &amp; Safety</b> .....	<b>63</b>
<b>Conditions of Sale</b> .....	<b>64</b>
<b>Host Farm</b> .....	<b>65</b>

## North Island Deer Specialists

**Paul Lampp** 027 442 6477

*Paul Lampp Livestock*

**Noel Cudby** 027 444 4620

*Deer Agent*

**Keith Burden** 027 597 5801

*Deer Specialist*

**Graham Kinsman** 027 422 3154

*PGG Wrightson*

**Neville Clark** 027 598 6537

*Auctioneer*

All BV's quoted for animals born 2017 were taken from the A/H (across herds) run dated October 2019. Sire stags BV's quoted are from the A/H run dated October 2019. IOA (inches of antler) is a term now recognised as a measurement of live stags in hard antler, which is equivalent to the SCI scoring method.

# Welcome



Welcome to our 8th annual North Island 2-year-old red stag sale at Te Maire.

Within our herd we continue to realise great results against our stud's key measures and stated vision of producing high value animals, that have a strong venison focus. For example, over the last few years, we have achieved a loin weight gain of 0.9kgs. Achieving in real terms an average weight of 3.7kgs to 4.6kgs, for animals of the same liveweight - an outstanding achievement for this important high value, export market cut.

This year's sale includes stags sired by:

- **Cardrona** - progeny is available in the North Island for the first time. This exceptional stag possesses a superb combination of velvet and body weights.
- **Churchill** - continues to be ranked NO. 1 English stag for W12eBV for 7 years running. This year we have several of his quality sons on offer.
- **Tui** - ranked NO. 1 for conception date EBV (CDeBV) at -11.2 days, meaning early fawns on the ground giving you a great start for heavier weaning weights.
- **Rock Me** - once again we have progeny on offer from this key stud sire. He brings an outstanding bloodline with top performance that delivers on all key maternal traits, as well as exceptional velvet.
- **WF 144/05** - is one of our stalwart stags. I can strongly recommend the progeny on offer by this well proven sire for both maternal and terminal breeding.
- **WF 334/11** - has several outstanding sons on offer within the catalogues. These possess solid eBV's, growth rates and eye muscle areas to enhance your venison production.
- **Vova** - is a pure Eastern with solid growth rates and velvet performance. His pedigree contains industry heavyweights Vladimir and Heinrich.

Please note this year we have made the decision to organise the freight on account of the purchaser, unless specifically requested otherwise. This is to minimise the risk of injury to your purchase/s by reducing the number of yarding's.

We look forward to hosting you at Te Maire in conjunction with George and Laura.

Should you have any questions prior to the sale, please do not hesitate to contact one of us.

Yours in farming,

Michael Wilkins  
Wilkins Farming Co

**PLEASE BRING THIS CATALOGUE WITH YOU ON THE DAY**



WILKINS FARMING CO  
— BREEDING FOR THE FUTURE —

## History & Vision

### We have been breeding deer for over five decades.

**Our original bloodlines were sourced in the 1980's and 1990's and are based mainly on King Richard, a recognised champion sire, from Festl Park in Germany. We then crossed these German genetics with Fredrich to introduce Hungarian bloodlines to further enhance the venison growth rates and velvet production in our hind base.**

In 2001 we initiated our first AI (Artificial Insemination) Programme, to introduce genetics from best in class sires. In addition, in 2004 we undertook our first Embryo Transfer (ET) Programme, identifying and multiplying the best genetics from our herd.

In 2008 we purchased the Stanfield Eastern European Red Deer stud, to strategically add substantial venison and antler enrichment to our breeding programme.

To add further venison depth to our hind base we then purchased the Doncaster Red Deer herd in 2012.

In 2015, in conjunction with Mt Hutt Station, we travelled throughout Europe and England to hand select World Leading Red Deer. After purchasing a number of stags, they were consolidated to England for further farming, where semen collection was undertaken for shipment back to our home farm in New Zealand.

Further, in 2018 we purchased the finest Woburn New Zealand herd, from Henrietta Dowager Duchess of Bedford. The stunning herd was originally sourced from the family's English Estate, one of the oldest managed deer herds in the world, dating back 100's of years.

As indicated by this brief historical insight, our dedication and investment (and that of other breeders whose herds we have purchased), is illustrative of our commitment to both the industry, and more specifically the ongoing development of our hind base.

## Vision

**Our aim is to produce a high value animal with a venison focus, from an efficient maternal weight hind using the latest technology and best genetics available.**

To achieve this, we use world leading genetics and combine them with performance measures such as ultrasound scanning, CT scanning, DEERSelect, progeny testing and DNA testing.

Through recording key trait data, it is easier to mate the right hind to the appropriate stag to achieve specific breeding goals. During the selection process, we are constantly reviewing breed values, bloodlines and performance to date.

**Our venison breeding programme employs the following foundations;**

1. An **average adult hind body weight of 118+ kg**, which assists in creating satisfactory breeding efficiency. (This enables us to get this hinds progeny to the high value early spring market)
2. An **animal with a high carcass yield**, that also has an increased percentage of more valuable meat cuts, in order to deliver higher returns.
3. Temperament, fertility, constitution, type and then calving date are our key measures for **successful breeding**.
4. A **strong velvet base** delivers diversity and potential income over and above venison.



**XCELL**

**BREEDING AND  
VETERINARY SERVICES**

## **SPECIALISTS IN DEER REPRODUCTION**

**‘YOUR SUCCESS IS OUR BUSINESS’**

**SUPPORTING THE DEER INDUSTRY SINCE 1996**

**Xcell Breeding and Veterinary Services**

143 Rangiora Woodend Road, Woodend 7610, North Canterbury **ph** 03 312 2191

**[www.xcell.co.nz](http://www.xcell.co.nz)**

**WHEN YOUR ADVICE  
IS REALLY GOOD,  
EVERYONE LISTENS.**

At FMG, we look after more rural New Zealanders than any other insurer. In fact, it's something we've been doing for 114 years now. So when it comes to offering specialist advice, like protecting deer sheds and farm buildings, we like to think we know what we're talking about. Ask around about us. Or better still call us directly on 0800 366 466.

*We're here for the good of the country.*

**FMG**  
Advice & Insurance



# Genomic Opportunities for NZ Deer

*For 20+ years GenomNZ has been conducting parentage analysis for the NZ Deer Industry. We offer a new SNP based parentage test, containing tens of thousands of markers providing a more accurate parentage assignment.*

This sequencing method provides precise genomic relationships and breed composition, as well as parentage analysis.

Ear tissue punches are our preferred sampling method (Allflex TSU). This sample type has been shown to provide both higher quality DNA as well as potential on-farm benefits.

#### **Hinds and Stags**

Profiling, breed composition  
\$27.50 per sample  
All prices excluding GST

#### **Calves**

Full pedigree, breed composition  
starting at \$25.85 per sample





# Success isn't something you inherit.

*Mike Wilkins is part of an innovative generation. One that's focused on growing successful businesses, not waiting expectantly for them. Wilkins Farming is a prime example. Together with his family, he's transformed it into something unique. See what's shaping the future of agribusiness at [sharedstories.co.nz](http://sharedstories.co.nz)*





WILKINS FARMING CO  
— BREEDING FOR THE FUTURE —

# HERD SIRES

All sires featured can be found on our website

[wilkinsfarming.co.nz](http://wilkinsfarming.co.nz)



Pictured: WF 144/05 at 4 years

# CARDRONA

Shown at 4 years  
Maternal - English Cross



CARDRONA  
ND/117/12

403  
BRED BY JOHN SCURR

ADONIS

HIGHLANDER HIND

ND 228/08  
NETHERDALE

WARDLAW

511Y  
STANFIELD



Cardrona's sire 403 - Shown at 6 years

**Cardrona is rated as one of our top sires. He delivers top growth rates and awesome velvet.**

Sired by John Scurr's 403 (a stag with serious trophy traits and wow factor), Cardrona was bred at Netherdale from an English hind.

As indicated below, aged 3 years (sale day) Cardrona weighed 258 kg and cut an impressive 6.2 kg of SA2 velvet. As at October 2019, his W12eBV result of +10.3 is solid for this type.

Cardrona remains a strong and influential part of our herd, and his influence in our breeding programme continues to be significant.

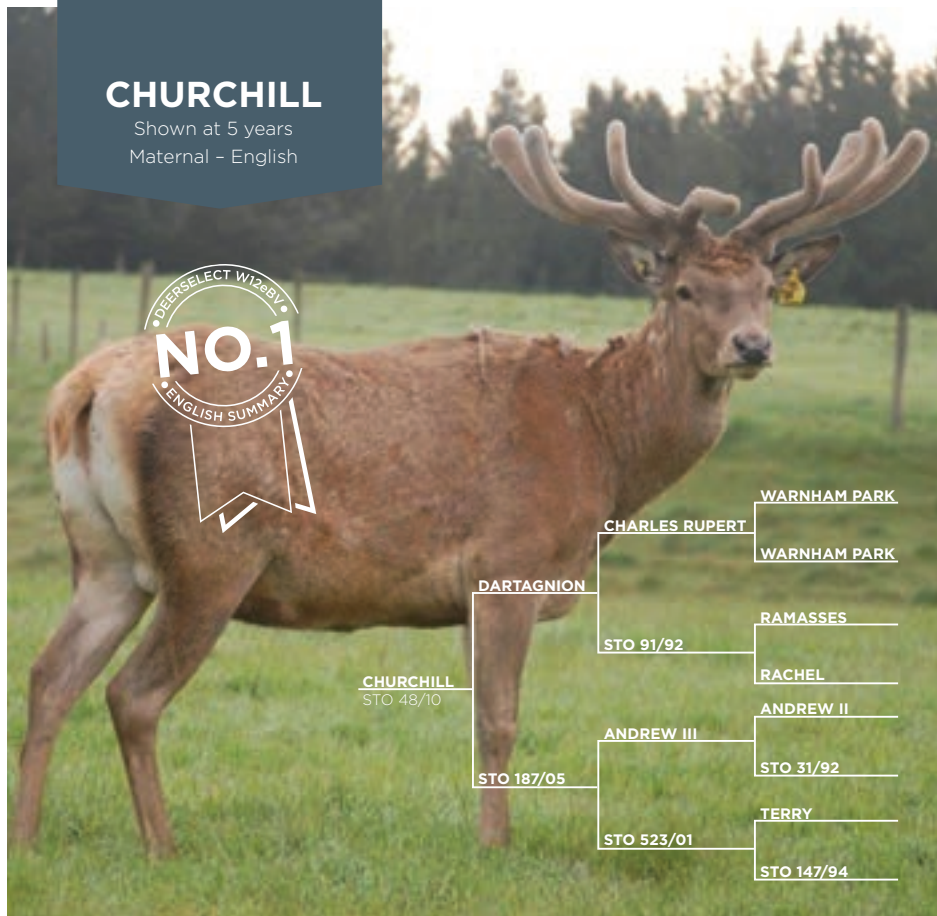


Shown at 3 years

AGE	YEAR	BODY WEIGHT (kg)	VELVET (kg)	GRADE
3 Months	2013	76		
14 Months	2014	145		
22 Months	2014	196.5		
W12eBV		10.3		
2 Years	2014		3.84 CUT VERY EARLY	SA2
3 Years (SALE DAY)	2015	258	6.2	SA2
4 Years	2016	297	10.3	SA2
5 Years	2017	NA	14	SS
DECEASED	2017			

# CHURCHILL

Shown at 5 years  
Maternal - English



CHURCHILL  
STO 48/10

DARTAGNION

CHARLES RUPERT

WARNHAM PARK

WARNHAM PARK

STO 91/92

RAMASSES

RACHEL

ANDREW III

ANDREW II

STO 187/05

STO 31/92

STO 523/01

TERRY

STO 147/94



Shown at 2 years



Shown at 2 years

## Churchill is a pure English sire whose growth rate is exceptional.

He is sired by Dartagnion, out of an Andrew III hind. Pure English, Warnham bloodlines.

He was a massive English stag, with the largest 15 and 18 month live weights Stanfield have produced for this type.

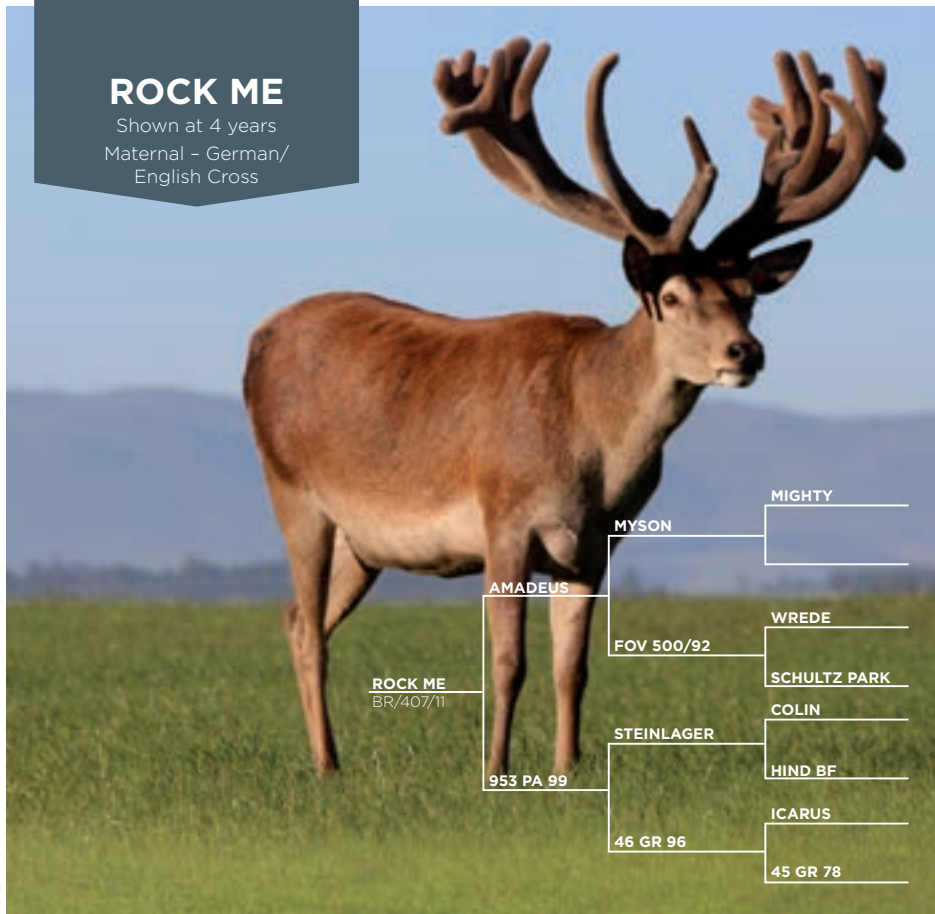
As indicated below, as at October 2019, Churchill's W12eBV was +17.5, with an accuracy of 99%. We are very pleased that Churchill is ranked No. 1 for W12eBV, and has been for 7 years (English sire summaries DEERSelect)

A key member of our stag team through AI, Churchill's reliability delivers progeny with exceptional growth rates and consistent velvet credentials.

AGE	YEAR	BODY WEIGHT (kg)	VELVET (kg)	GRADE
3 Weaning		70		
11 Months	2011	135.5		
W12eBV		17.5		
15 Months	2012	168		
2 Years	2012	237		
3 Years	2013	270	4.8	SA2
4 Years	2014	290	6	SA2
5 Years	2015	294	7	SA2
6 Years	2016	310	7.25	SA2
7 Years	2017	324	7.45	SA2
DECEASED	2018			

# ROCK ME

Shown at 4 years  
Maternal - German/  
English Cross



## Rock Me has it all. He is an impressive stag that delivers well on all key traits.

He is sired by Amadeus, a Pure German who was bred by Foveran. Foveran described Amadeus as "the most amazing 2-year-old stag ever produced". Rock Me's dam is sired by Steinlager, bred by Black Forest and goes back to Colin who is a Festl Park German Sire. All in all this impressive breeding delivers a 7/8th German/English.

Impressive growth rates achieved which are rarely seen for this type. 148 kg at 15 months of age, and 224 kg at 2 years (sale day). These factors influenced our purchase of this stag from Brock Deer, and as at October 2019 Rock Me's W12eBV was +8.7.

In addition, Rock Me offers outstanding antler, as you will see from the photos and data below. For example, at 2 years his velvet was estimated to be in excess of 6 kg. In December 2014 Rock Me cut an impressive 3 year old head of 14.8 kg OG velvet, along with 20 kg of OG velvet as a 4 year old.

Rock Me's influence within our European and Maternal breeding programme cannot be underestimated.



Shown at 2 years



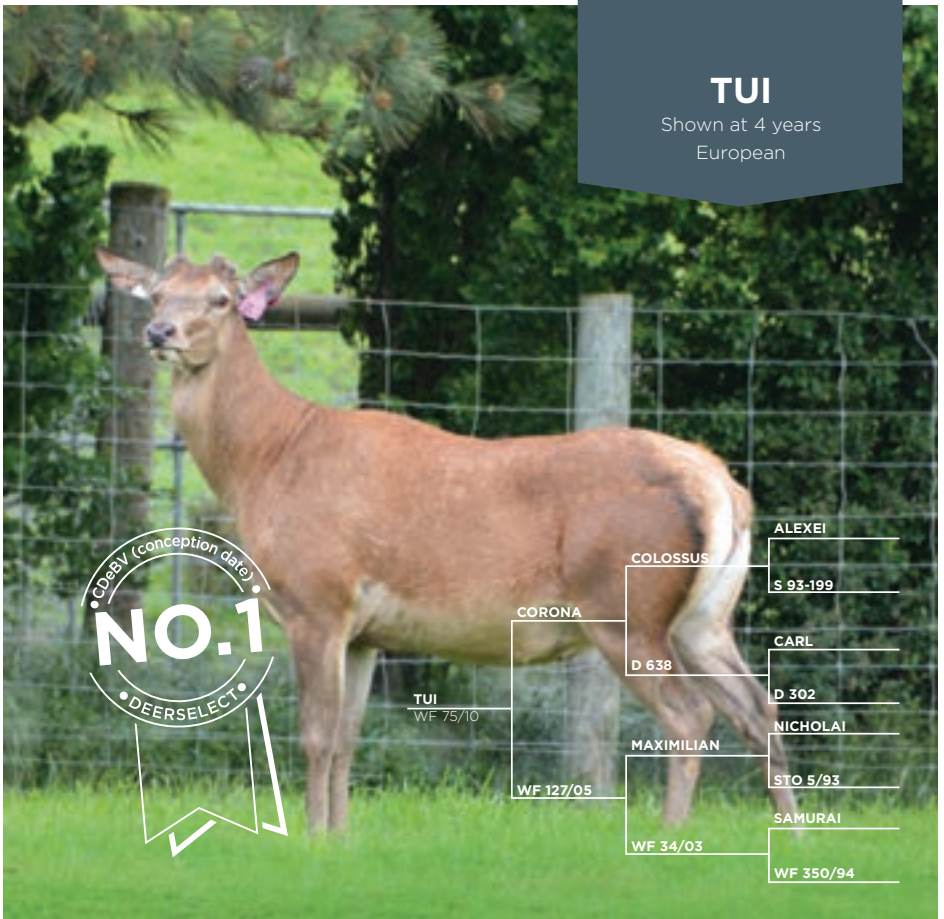
Shown at 3 years

AGE	YEAR	BODY WEIGHT (kg)	VELVET (kg)	GRADE
Weaning	23/04/2012	74		
W12eBV		8.7		
15 Months	February 2013	148		
2 Years	2013	224	370	IOA
3 Years	2014		14.8	OG
4 Years	2015		20	OG
DECEASED	2015			



# TUI

Shown at 4 years  
European



TUI  
WF 75/10

CORONA

WF 127/05

COLOSSUS

D 638

MAXIMILIAN

WF 34/03

ALEXEI

S 93-199

CARL

D 302

NICHOLAI

STO 5/93

SAMURAI

WF 350/94

## Tui is an exciting venison stag, who excels in both growth rate and conception date measures.

He is sired by Corona who goes back to Alexei. His dam WF 127/05 is a full sister to our super sire WF 144/05 (bred through one of our ET programs.) It should be noted that the hinds in Tui's pedigree have excellent performance and are second to none in our herd.

He has an outstanding temperament, an attribute we are pleased his progeny are inheriting, along with strong growth rates.

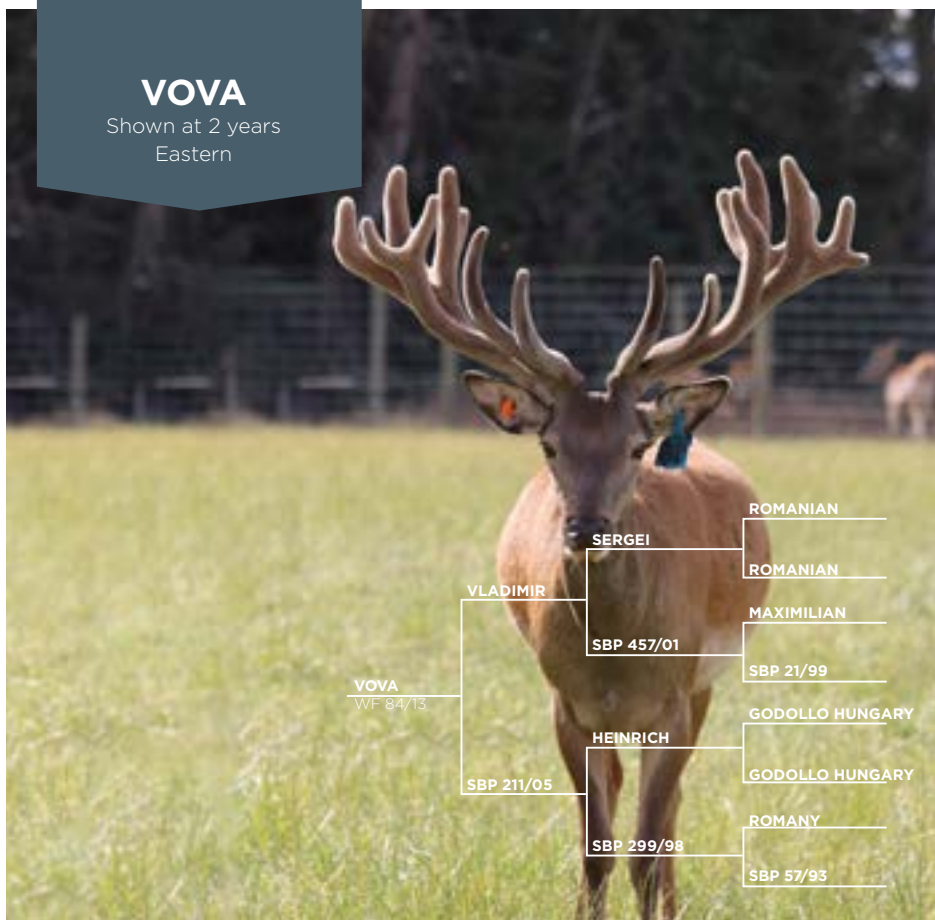
As at October 2019, his W12eBV was +20.4 as highlighted in the table to the right. Tui is Ranked No. 1 for CDeBV (conception date) at -11.2 days, which is an extremely valuable trait when trying to bring forward your fawning dates.

As you can see Tui's key traits can only but enhance your venison production through conception date and growth rate.

AGE	YEAR	BODY WEIGHT (kg)
3 Months	March	80
11 Months	October	137
W12eBV		20.4
LEANeBV		5.15
Estimated Loin Weight		4.47
15 Months		172
2 Years	2012	245
3 Years	2013	300
4 Years	2014	320
5 Years	2015	330
6 Years	2016	340
7 Years	2017	344
8 Years	2018	362

# VOVA

Shown at 2 years  
Eastern



Shown at 2 years



Shown at 5 years

**Vova is an eye catching Eastern stag with outstanding antler and solid body weights.**

He was bred by Wilkins Farming Co and retained from our 2013 crop. As shown above his pedigree originates from our stalwart sires Vladimir and Heinrich.

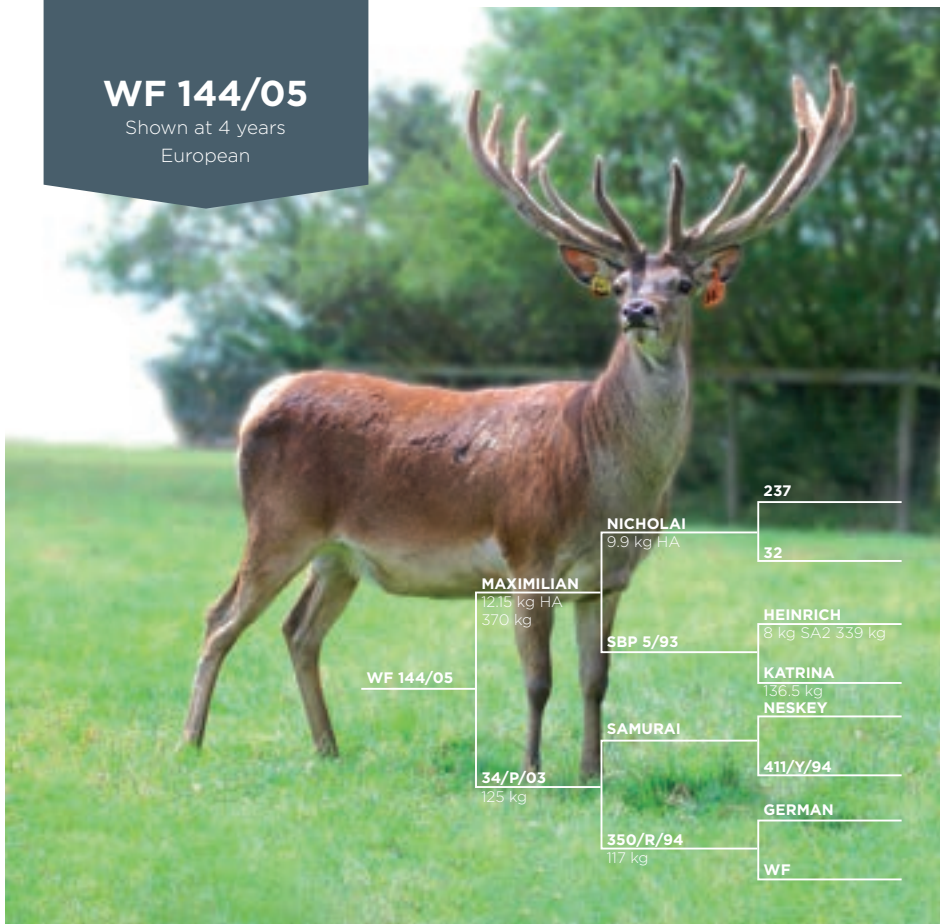
As a 2 year old Vova grew an impressive well balanced multi-point antler, and had a significant live weight of 247 kg. These two traits combined make for an impressive sire – one to keep an eye out for.

AGE	YEAR	BODY WEIGHT (kg)	VELVET (kg)	GRADE
3 Months	2014	65		
12 Months	2014	131		
W12eBV		11.3		
LEANeBV		3.36		
Estimated Loin Weight		3.76		
15 Months	2015	167		
2 Years	2015	247	Grown Out	
3 Years	2016	285	Grown Out	
4 Years	2017	315	5.1	SA
5 Years	2018	335	6.6	SA



# WF 144/05

Shown at 4 years  
European



WF 144/05

MAXIMILIAN

12.15 kg HA  
370 kg

34/P/03

125 kg

NICHOLAI

9.9 kg HA

SBP 5/93

SAMURAI

350/R/94

117 kg

237

32

HEINRICH

8 kg SA2 339 kg

KATRINA

136.5 kg

NESKEY

411/Y/94

GERMAN

WF

## WF 144/05 is one of our stalwart sires, offering exceptional growth rates, yield and hardiness.

Sired by Maximilian, out of WF 34/03, one of our best dams for breeding efficiency.

Ranked No. 1 for our born 2005 progeny for loin and carcass indexes, WF 144/05 continues to deliver well on all key performance measures.

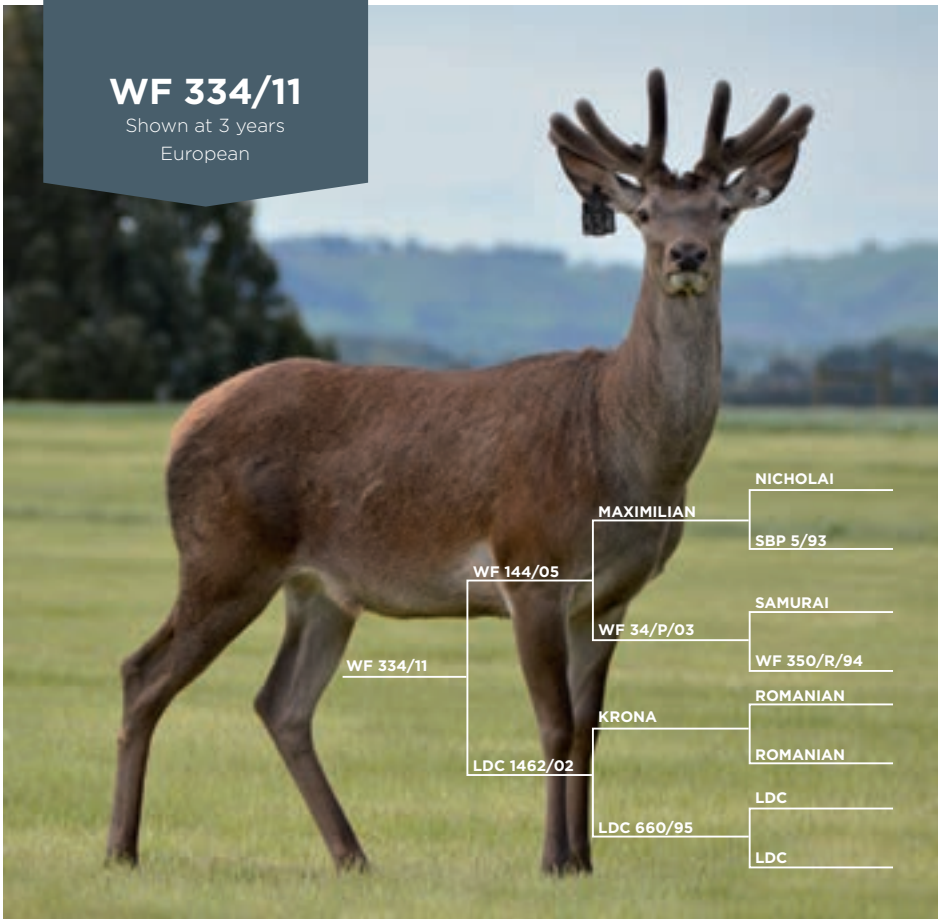
As at October 2019, WF 144/05 had a current W12eBV of +18.8, with a 99% accuracy from 725 recorded progeny.

WF 144/05 is an ideal multipurpose sire for breeding replacement hinds with strong maternal traits, as well as high growth rates for venison production. He has great conformation, and we are continually impressed with his constitution through, and after the roar.

AGE	YEAR	BODY WEIGHT (kg)	VELVET (kg)	GRADE
Jan	2006	48		
3 Months	March 2006	74		
6 Months	May 2006	101		
11 Months	October 2006	139		
14 Months	February 2007	187		
W12eBV		18.8		
2 Years	2008	213	3	A2S
3 Years	2009		Grown Out	
4 Years	2010	318	Grown Out	TBA
5 Years	2011		5.46	SA2
6 Years	2012	360	6.2	SA2
7 Years	2013	360	6.25	SA2
8 Years	2014	350	7.1	SA2
9 Years	2015	345	7.25	SA2
10 Years	2016		7.5	SA2
DECEASED	2017			

# WF 334/11

Shown at 3 years  
European



## WF 334/11 is a star European stag for our born 2011 progeny with respect to venison production.

Sired by our stalwart sire WF 144/05 bred from a Doncaster hind, WF 334/11 was the heaviest 11 month stag at 146.5 kg, and a massive 188 kg at 15 months.

As shown in the table on the right, WF 334/11 not only returned a W12eBV of +22.1 in October 2019, but is also ranked in the top 5 for every other trait in our born 2011 progeny.

In 2019 WF 334/11 was the sire of impressive two year old stags with weights up to 278 kg.

WF 334/11 is following in the footsteps of his father, WF 144/05 as an all-round super star stag.

AGE	YEAR	BODY WEIGHT (kg)
Weaning	2012	77
11 Months	2012	146.5
W12eBV		+22.1
LEANeBV		8.64
Estimated Loin Weight		4.92
EMA		36.93
15 Months	2013	188
2 Years	2013	240
3 Years	2014	292
4 Years	2015	324
5 Years	2016	325
6 Years	2017	330
DECEASED	2018	



**WILKINS FARMING CO**  
— BREEDING FOR THE FUTURE —

# SALE LOTS

All sires featured can be found on our website

[wilkinsfarming.co.nz](http://wilkinsfarming.co.nz)



Pictured: Tui at 4 years

# Maternal Sale Lot Index

Animals highlighted in bold are ranked in the top 6 of Maternal animals on offer at this sale for this trait.

Lot No.	Tag	Sire	Dam	W12eBV	EMAceBV	CDeBV	Est. Loin weight	EMA	Weaning weight	11 month weight	15 month weight
1	862	Tui	WF 493/13	<b>17.42</b>	-0.49	<b>-8.02</b>	4.45	33.3	57	112	140
2	542	Churchill	WF Eng	<b>17.05</b>	-0.31	<b>-5.05</b>	<b>4.66</b>	33.46	66	<b>121</b>	<b>157</b>
3	800	Churchill	WF 473/14	<b>16.83</b>	<b>1.86</b>	<b>-5.20</b>	<b>5.28</b>	<b>38.47</b>	59	112	<b>154</b>
4	528	Churchill	WF 537/13	<b>16.54</b>	<b>1.52</b>	-4.66	<b>5.02</b>	<b>36.54</b>	51	<b>120</b>	<b>164</b>
5	684	Rock Me	WF 510/10	<b>16.49</b>	-1.20	<b>-5.43</b>	<b>5.30</b>	<b>34.43</b>	<b>84</b>	<b>129</b>	<b>162</b>
6	508	Churchill	LDC 336/07	<b>14.62</b>	<b>1.19</b>	-4.54	4.30	34.20	<b>66</b>	108	130
7	462	Rock Me	LDC 262/07	13.50	-1.06	-4.40	4.42	33.70	<b>69</b>	<b>117</b>	<b>171</b>
8	385	Tui	WF 388/11	13.11	-0.39	<b>-6.29</b>	4.20	33.30	64	104	131
9	656	Churchill	WF 705/11	13.07	<b>0.01</b>	-4.75	4.35	34.20	62	107	134
10	646	Churchill	WF 544/12	11.97	-0.18	-4.90	4.53	32.05	<b>69</b>	113	142
11	926	Tui	WF 307/11	11.78	-0.16	<b>-7.10</b>	<b>4.61</b>	34.12	58	111	149
12	200	Cardrona	WF 229/13	11.19	0.008	0.13	4.60	<b>35.12</b>	55	<b>113</b>	137
13	906	Cardrona	AR 31/15	11.14	<b>0.11</b>	1.78	4.15	32.74	48	105	135
14	344	Cardrona	WF 443/14	11.01	-0.07	-2.69	4.61	<b>34.65</b>	53	105	136
15	724	Rock Me	WF 2029/09	8.87	<b>0.86</b>	-3.77	<b>5.67</b>	<b>39.51</b>	<b>71</b>	<b>116</b>	<b>155</b>
16	782	Rock Me	WF 508/11	5.73	-0.74	-3.28	4.36	33.28	<b>70</b>	101	133



**WILKINS FARMING CO**  
BREEDING FOR THE FUTURE

See page 50 for details on abbreviations

# European & Eastern Sale Lot Index

Animals highlighted in bold are ranked in the top 6 of European and Eastern animals on offer at this sale for this trait.

Lot No.	Tag	Sire	Dam	W12eBV	EMAceBV	CDeBV	Est. Loin weight	EMA	Weaning 11 month weight	15 month weight	
17	306	WF 334/11	WF 736/12	<b>22.20</b>	0.30	<b>-6.40</b>	<b>5.29</b>	<b>37.39</b>	61	<b>131</b>	<b>167</b>
18	584	WF 334/11	WF 561/13	<b>21.83</b>	0.19	<b>-6.32</b>	4.48	32.14	70	<b>126</b>	<b>163</b>
19	522	WF 334/11	LDC 830/10	<b>20.50</b>	0.23	-3.68	4.52	33.96	<b>75</b>	<b>126</b>	<b>163</b>
20	766	WF 144/05	WF 163/03	<b>19.04</b>	<b>1.21</b>	-4.21	4.65	35.30	<b>72</b>	116	146
21	400	WF 144/05	WF 481/13	<b>18.37</b>	<b>1.54</b>	<b>-4.35</b>	<b>4.95</b>	<b>36.20</b>	64	117	138
22	838	WF 334/11	TOT 9/10	<b>17.98</b>	0.76	<b>-4.57</b>	<b>4.99</b>	34.30	<b>74</b>	<b>136</b>	<b>164</b>
23	497	WF 144/05	WF 512/12	16.42	<b>1.48</b>	<b>-5.89</b>	4.55	35.10	65	113	140
24	14	Vova	SBP 319/07	14.80	-0.25	-2.06	<b>5.80</b>	<b>41.63</b>	<b>75</b>	<b>134</b>	<b>165</b>
25	610	WF 144/05	WF 103/05	14.58	<b>1.71</b>	-3.09	<b>5.75</b>	<b>40.65</b>	<b>76</b>	121	158
26	60	Vova	WF 2033/09	11.64	-0.29	-2.90	<b>4.96</b>	<b>37.28</b>	64	120	152
27	10	Vova	WF 25/13	9.52	-1.48	-3.52	4.15	30.66	69	116	148
28	54	Vova	WF 2036/09	9.42	-0.24	-3.05	4.92	<b>35.81</b>	<b>71</b>	122	151
29	548	WF 144/05	WF 857/13	16.90	<b>1.05</b>	-3.59	4.81	35.57	67	118	150
30	682	WF 144/05	WF 503/13	16.89	<b>1.24</b>	<b>-4.65</b>	4.46	32	66	<b>125</b>	<b>159</b>
31	688	WF 144/05	WF 79/08	16.59	0.93	-3.96	4.38	32.42	68	119	154



**WILKINS FARMING CO**  
BREEDING FOR THE FUTURE

See page 50 for details on abbreviations



LOT 3

**TAG 800**

SIRE: CHURCHILL

W12eBV	<b>16.83</b>
EMAceBV	<b>1.86</b>
CDeBV	<b>-5.20</b>
15 MONTH WEIGHT	154



LOT 4

**TAG 528**

SIRE: CHURCHILL

W12eBV	<b>16.54</b>
EMAceBV	<b>1.52</b>
CDeBV	-4.66
15 MONTH WEIGHT	164



LOT 12

**TAG 200**

SIRE: CARDRONA

W12eBV	11.19
EMAceBV	0.008
CDeBV	0.13
15 MONTH WEIGHT	137



LOT 16

**TAG 782**

SIRE: ROCK ME

W12eBV	5.73
EMAceBV	-0.74
CDeBV	-3.28
15 MONTH WEIGHT	133

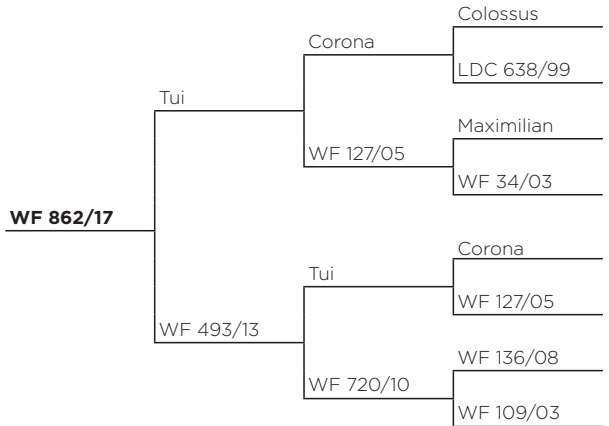




**LOT No. 1**

*MATERNAL*

MEASURE	RESULT
Weaning weight	57
11 month live weight	112
15 month live weight	140
W12eBV	<b>17.42</b>
EMAceBV	-0.49
CDeBV	<b>-8.02</b>
Estimated loin weight	4.45
Eye muscle area	33.3

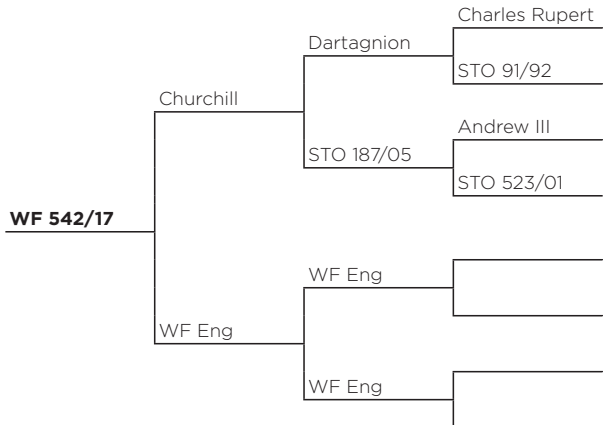


Sired by Tui, who is out of WF 127/05 a full sister to 144/05, this stag features a solid W12eBV, excellent conception date eBV (CDeBV) of **-8.02 days** for early calving.

**LOT No. 2**

*MATERNAL*

MEASURE	RESULT
Weaning weight	66
11 month live weight	<b>121</b>
15 month live weight	<b>157</b>
W12eBV	<b>17.05</b>
EMAceBV	-0.31
CDeBV	<b>-5.05</b>
Estimated loin weight	<b>4.66</b>
Eye muscle area	33.46



Sired by NO.1 English sire Churchill for W12eBV. Impressive W12eBV for English sired animal with an early conception date (CDeBV) of **-5.05 days**.

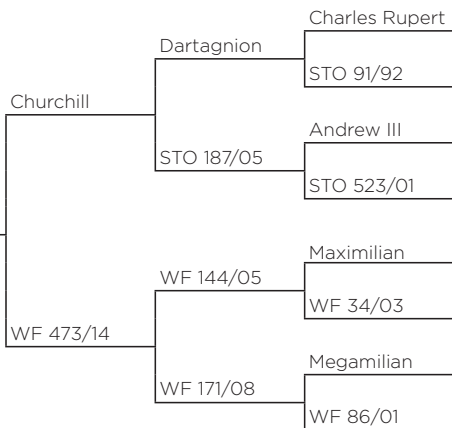


**LOT No. 3**

*MATERNAL*

MEASURE	RESULT
<i>Weaning weight</i>	59
<i>11 month live weight</i>	112
<i>15 month live weight</i>	<b>154</b>
<i>W12eBV</i>	<b>16.83</b>
<i>EMAcBV</i>	<b>1.86</b>
<i>CDeBV</i>	<b>-5.20</b>
<i>Estimated loin weight</i>	<b>5.28</b>
<i>Eye muscle area</i>	<b>38.47</b>

**WF 800/17**



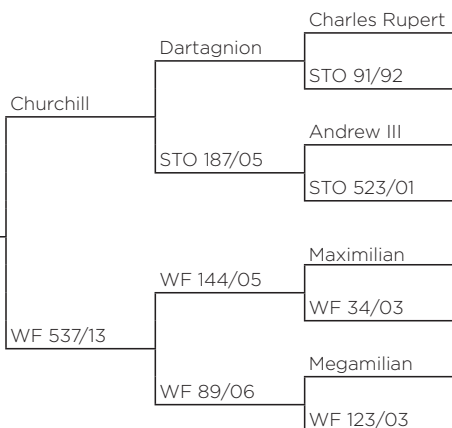
Churchill over WF 144/05 - a proven cross. Excellent figures behind this stag, top W12eBV again for an English sired animal - check out his estimated loin weight of **5.28 kg, very impressive!**

**LOT No. 4**

*MATERNAL*

MEASURE	RESULT
<i>Weaning weight</i>	51
<i>11 month live weight</i>	120
<i>15 month live weight</i>	<b>164</b>
<i>W12eBV</i>	<b>16.54</b>
<i>EMAcBV</i>	<b>1.52</b>
<i>CDeBV</i>	-4.66
<i>Estimated loin weight</i>	<b>5.02</b>
<i>Eye muscle area</i>	<b>36.54</b>

**WF 528/17**



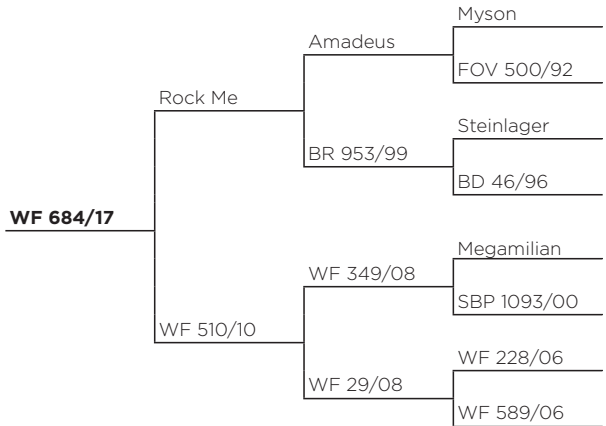
Sired by the NO. 1 English stag for W12eBV Churchill out of a WF 144/05 hind. Good mix of top shelf proven maternal genetics. Exceptional growth rates weaning 51 kg and achieving **164 kg** by 15 months, as well as a very impressive loin weight **5.02 kg**. One not to be missed!



**LOT No. 5**

*MATERNAL*

MEASURE	RESULT
Weaning weight	<b>84</b>
11 month live weight	<b>129</b>
15 month live weight	<b>162</b>
W12eBV	<b>16.49</b>
EMAceBV	-1.20
CDeBV	<b>-5.43</b>
Estimated loin weight	<b>5.3</b>
Eye muscle area	<b>34.43</b>

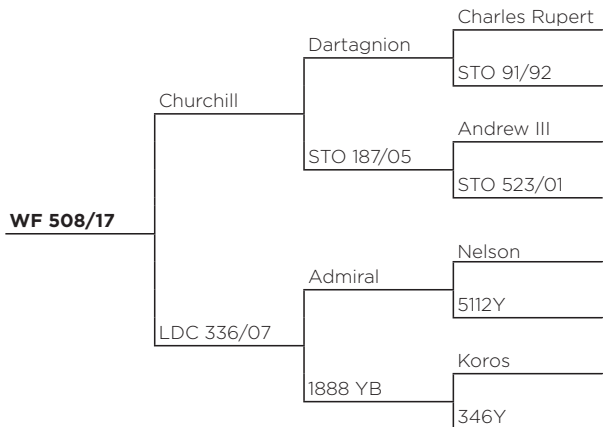


Sired by the impressive Rock Me out of a spiker mating going back to Megamilian. Excellent weaning weight of **84 kg** and 15 month weight of **162 kg**. Solid W12eBV for this type, 3rd highest loin weight of the sale and good breeding efficiency of 54%.

**LOT No. 6**

*MATERNAL*

MEASURE	RESULT
Weaning weight	<b>66</b>
11 month live weight	108
15 month live weight	130
W12eBV	<b>14.62</b>
EMAceBV	<b>1.19</b>
CDeBV	-4.54
Estimated loin weight	4.3
Eye muscle area	34.2



Churchill over an Admiral hind (German blood) Strong English/German influence for hardiness with solid performance.

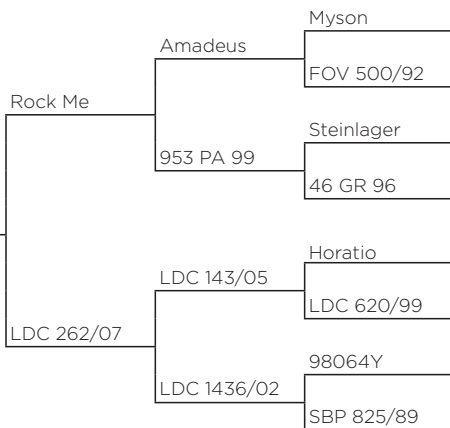


**LOT No. 7**

**MATERNAL**

MEASURE	RESULT
Weaning weight	<b>69</b>
11 month live weight	<b>117</b>
15 month live weight	<b>171</b>
W12eBV	13.5
EMAcBV	-1.06
CDeBV	-4.40
Estimated loin weight	4.42
Eye muscle area	33.7

**WF 462/17**



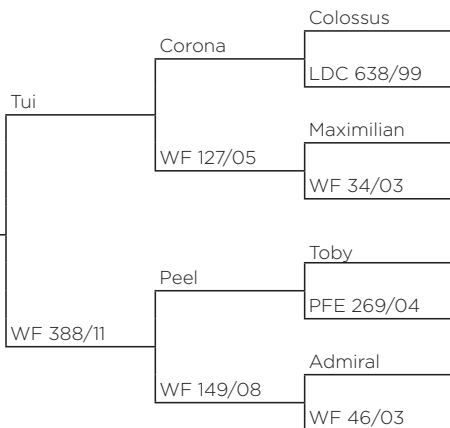
Rock Me over a Doncaster hind. A great opportunity here to purchase a son by the impressive Rock Me. Good weaning weight of **69 kg** through to his 15 month live weight of **171 kg**, big growth!

**LOT No. 8**

**MATERNAL**

MEASURE	RESULT
Weaning weight	64
11 month live weight	104
15 month live weight	131
W12eBV	13.11
EMAcBV	-0.39
CDeBV	<b>-6.29</b>
Estimated loin weight	4.2
Eye muscle area	33.3

**WF 385/17**



Tui over Peel, good maternal genetics here. Solid W12eBV and impressive conception date EBV (CDeBV) of **-6.29 days** - a great option to get those early fawns on the ground.

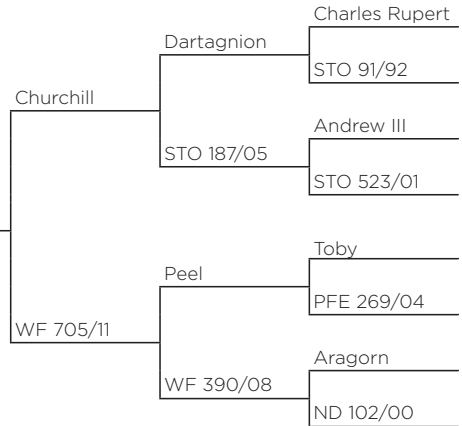


**LOT No. 9**

*MATERNAL*

MEASURE	RESULT
Weaning weight	62
11 month live weight	107
15 month live weight	134
W12eBV	13.07
EMAceBV	0.01
CDeBV	-4.75
Estimated loin weight	4.35
Eye muscle area	34.2

**WF 656/17**



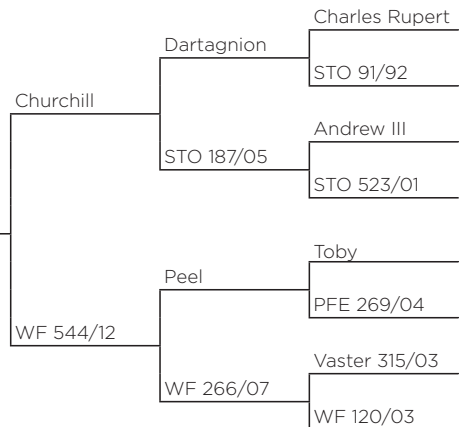
Another chance to buy a good Churchill son with a solid W12eBV of 13.07. This stag goes back to Peel and Aragorn, 92% English giving him very strong maternal traits.

**LOT No. 10**

*MATERNAL*

MEASURE	RESULT
Weaning weight	<b>69</b>
11 month live weight	113
15 month live weight	142
W12eBV	11.97
EMAceBV	-0.18
CDeBV	-4.90
Estimated loin weight	4.53
Eye muscle area	32.05

**WF 646/17**



A lot to like about this stags bloodline, Churchill over a Peel hind. Strong English/German influence for maternal traits, solid growth rates and a breeding efficiency of 54%.

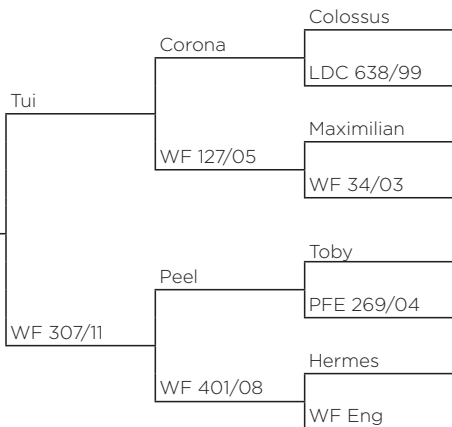


**LOT No. 11**

**MATERNAL**

MEASURE	RESULT
<i>Weaning weight</i>	58
<i>11 month live weight</i>	111
<i>15 month live weight</i>	149
<i>W12eBV</i>	11.78
<i>EMAceBV</i>	-0.16
<i>CDeBV</i>	<b>-7.10</b>
<i>Estimated loin weight</i>	<b>4.61</b>
<i>Eye muscle area</i>	34.12

**WF 926/17**



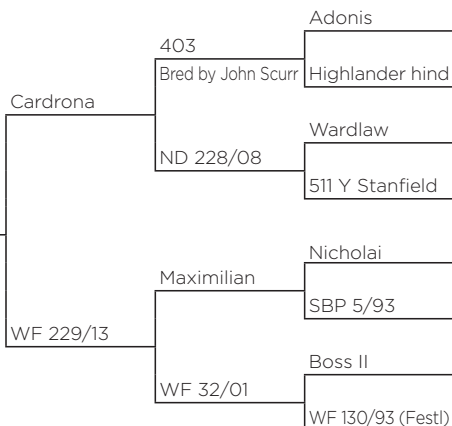
Sired by NO 1. conception date sire Tui out of a Peel hind. This stag boasts a **-7.10 days** (CDeBV) conception date EBV. Impressive 54% breeding efficiency. A strong influence of maternal genetics in this stag.

**LOT No. 12**

**MATERNAL**

MEASURE	RESULT
<i>Weaning weight</i>	55
<i>11 month live weight</i>	<b>113</b>
<i>15 month live weight</i>	137
<i>W12eBV</i>	11.19
<i>EMAceBV</i>	0.008
<i>CDeBV</i>	0.13
<i>Estimated loin weight</i>	4.6
<i>Eye muscle area</i>	<b>35.12</b>

**WF 200/17**



An opportunity to purchase a Cardrona son with some german influence from the dam side. Good growth, eye muscle area and loin weight.

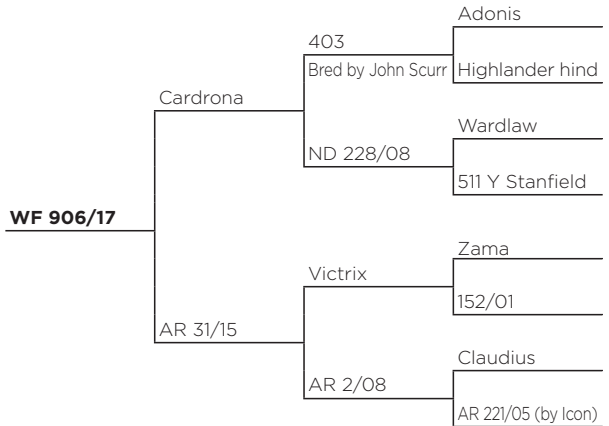




**LOT No. 13**

*MATERNAL*

MEASURE	RESULT
Weaning weight	48
11 month live weight	105
15 month live weight	135
W12eBV	11.14
EMAceBV	<b>0.11</b>
CDeBV	1.78
Estimated loin weight	4.15
Eye muscle area	32.74

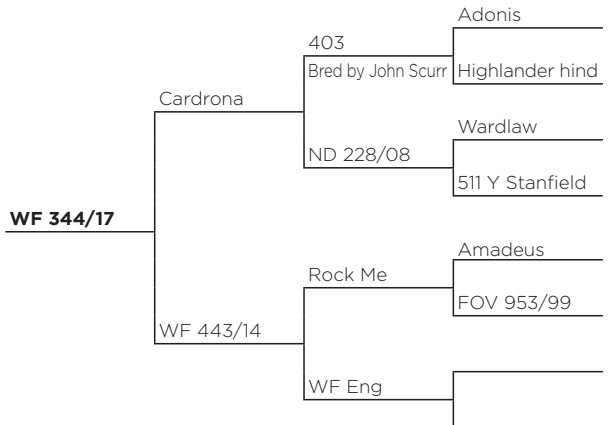


Cardrona over Arawata hind by Victrix. Two powerful antler sires in this mix. Victrix was a tremendous 478 1/2 IOA at 4 years of age. Good growth rates starting from 48 kg to get to 105 kg at 11 months. Solid W12eBV of +11.

**LOT No. 14**

*MATERNAL*

MEASURE	RESULT
Weaning weight	53
11 month live weight	105
15 month live weight	136
W12eBV	11.01
EMAceBV	-0.07
CDeBV	-2.69
Estimated loin weight	4.61
Eye muscle area	<b>34.65</b>



Cardrona over Rock Me, two awesome maternal sires. Impressive velvet and venison credentials, good estimated loin weight.

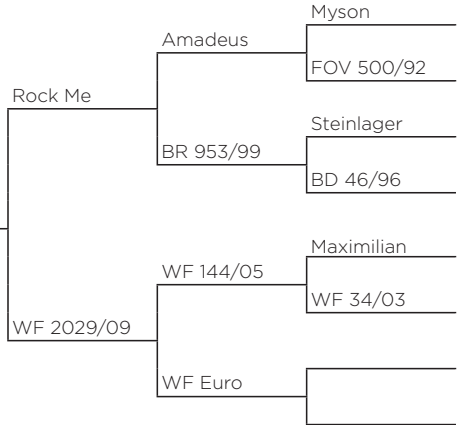


**LOT No. 15**

**MATERNAL**

MEASURE	RESULT
Weaning weight	<b>71</b>
11 month live weight	<b>116</b>
15 month live weight	<b>155</b>
W12eBV	8.87
EMAceBV	<b>0.86</b>
CDeBV	-3.77
Estimated loin weight	<b>5.67</b>
Eye muscle area	<b>39.51</b>

**WF 724/17**



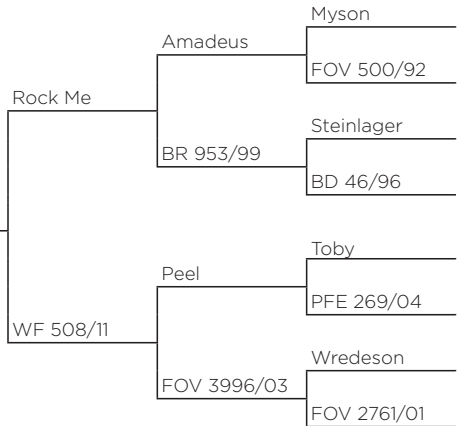
Sired by superstar Rock Me, awesome mix of growth and yield. **71 kg** weaning through to **155 kg** at 15 months. **No. 3** loin muscle weight of **5.67 kg**.

**LOT No. 16**

**MATERNAL**

MEASURE	RESULT
Weaning weight	<b>70</b>
11 month live weight	101
15 month live weight	133
W12eBV	5.73
EMAceBV	-0.74
CDeBV	-3.28
Estimated loin weight	4.36
Eye muscle area	33.28

**WF 782/17**



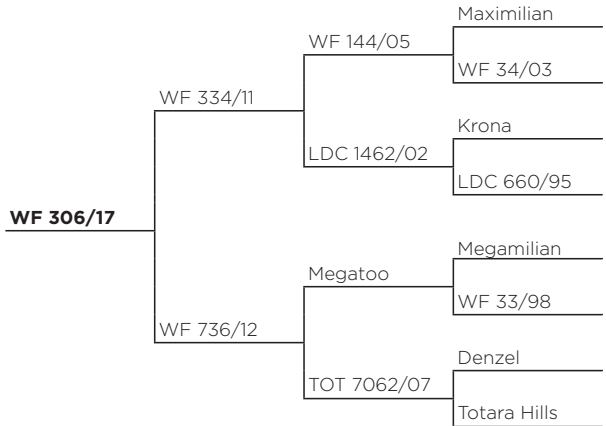
Rock Me combined with proven performer Peel to produce maternal genetics. Good weaning weight **70 kg**. An exciting mix of velvet/antler genetics with Rock Me going back to **Infinity's dam FOV 3996/03**.



**LOT No. 17**

EUROPEAN

MEASURE	RESULT
Weaning weight	61
11 month live weight	<b>131</b>
15 month live weight	<b>167</b>
W12eBV	<b>22.2</b>
EMAcEBV	0.30
CDeBV	<b>-6.40</b>
Estimated loin weight	<b>5.29</b>
Eye muscle area	<b>37.39</b>

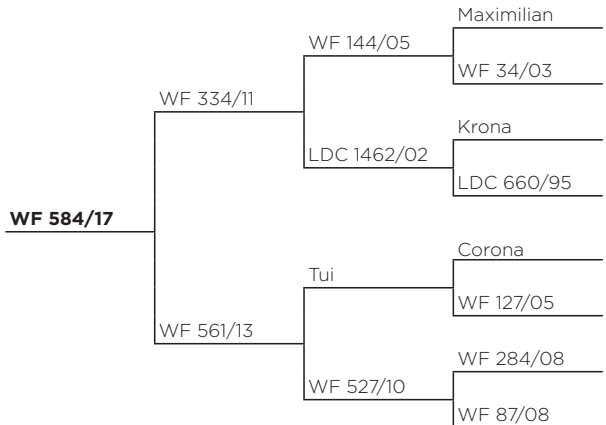


WF 334/11 over a proven sale stag producing Megatoo hind. Excellent growth rates from weaning to 15 months **167 kg**, big eye muscle area (EMA) and loin weight of **5.29 kg**.

**LOT No. 18**

EUROPEAN

MEASURE	RESULT
Weaning weight	70
11 month live weight	<b>126</b>
15 month live weight	<b>163</b>
W12eBV	<b>21.83</b>
EMAcEBV	0.19
CDeBV	<b>-6.32</b>
Estimated loin weight	4.48
Eye muscle area	32.14



Sired by WF 334/11 out of a Tui hind. Excellent figures behind this stag including a W12eBV of **21.83**. Of note is his calving date ebv (CDeBV) of **-6.32 days**. Again impressive 15 month growth of **163 kg**.

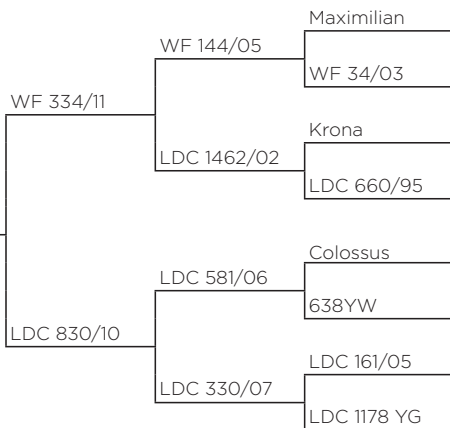


**LOT No. 19**

EUROPEAN

MEASURE	RESULT
Weaning weight	<b>75</b>
11 month live weight	<b>126</b>
15 month live weight	<b>163</b>
W12eBV	<b>20.5</b>
EMAceBV	0.23
CDeBV	-3.68
Estimated loin weight	4.52
Eye muscle area	33.96

**WF 522/17**



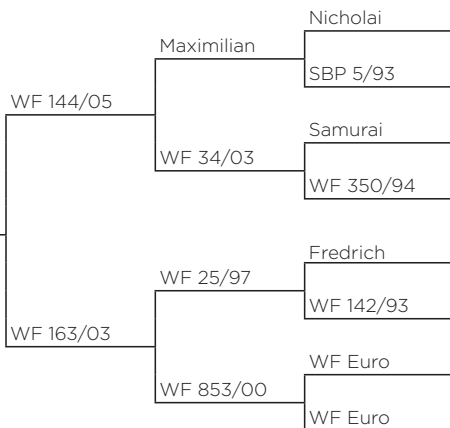
Sired by WF 334/11 over a proven sire producing Doncaster hind. Big weaning weight of **75 kg** through to **163 kg** at 15 months.

**LOT No. 20**

EUROPEAN

MEASURE	RESULT
Weaning weight	<b>72</b>
11 month live weight	116
15 month live weight	146
W12eBV	<b>19.04</b>
EMAceBV	<b>1.21</b>
CDeBV	-4.21
Estimated loin weight	4.65
Eye muscle area	35.3

**WF 766/17**



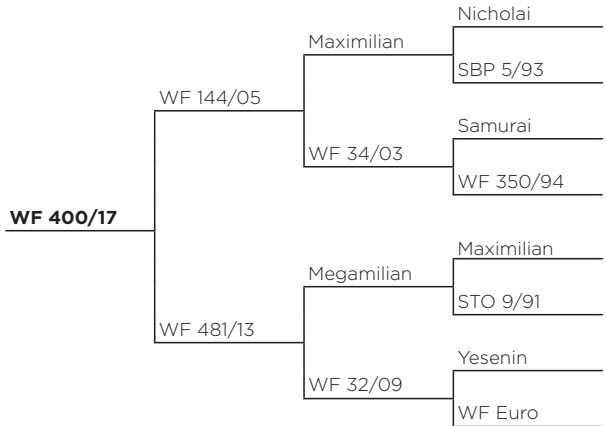
One of our stalwart stags WF 144/05 over proven WF dam 163/03 who has bred 5 sale stags including this one. Awesome depth of breeding Strong W12eBV of **19.04** and sound growth rates. Excellent weaning weight of **72 kg**.



**LOT No. 21**

EUROPEAN

MEASURE	RESULT
Weaning weight	64
11 month live weight	117
15 month live weight	138
W12eBV	<b>18.37</b>
EMAceBV	<b>1.54</b>
CDeBV	<b>-4.35</b>
Estimated loin weight	<b>4.95</b>
Eye muscle area	<b>36.2</b>

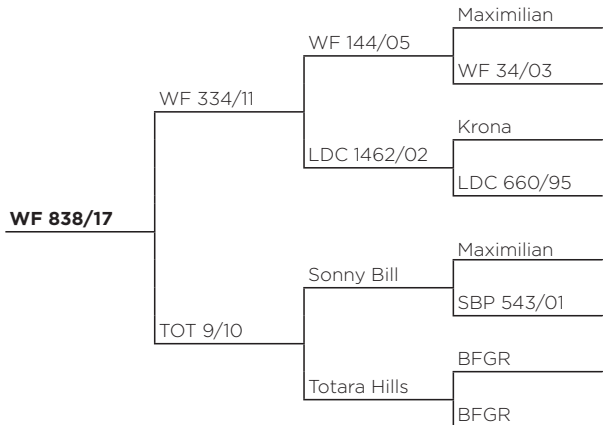


Again proven sires with WF 144/05, Megamilian and Yesenin featuring - great combination. Solid performing stag.

**LOT No. 22**

EUROPEAN

MEASURE	RESULT
Weaning weight	<b>74</b>
11 month live weight	<b>136</b>
15 month live weight	<b>164</b>
W12eBV	<b>17.98</b>
EMAceBV	0.76
CDeBV	<b>-4.57</b>
Estimated loin weight	<b>4.99</b>
Eye muscle area	34.3



Sired by WF 334/11 out of a Totara Hills hind this stag features a solid W12eBV and impressive growth rates, **74 kg** at weaning through to **164 kg** at 15 months as well as an estimated loin weight **4.99 kg** - good all round meat production.

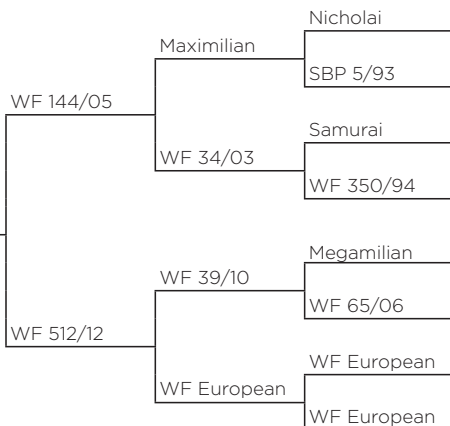


**LOT No. 23**

..... EUROPEAN

MEASURE	RESULT
<i>Weaning weight</i>	65
<i>11 month live weight</i>	113
<i>15 month live weight</i>	140
<i>W12eBV</i>	16.42
<i>EMAceBV</i>	<b>1.48</b>
<i>CDeBV</i>	<b>-5.89</b>
<i>Estimated loin weight</i>	4.55
<i>Eye muscle area</i>	35.1

**WF 497/17**



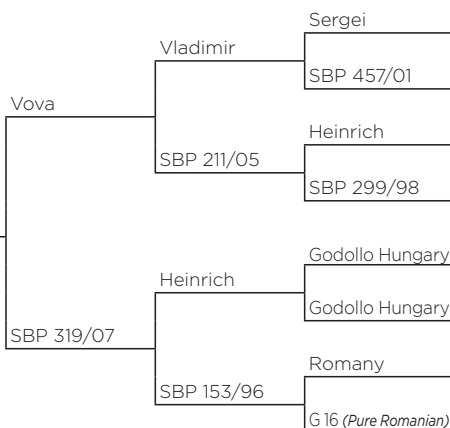
Sired by WF 144/05 going back to Megamilian. Proven sires with solid growth rates and good conception date EBV (CDeBV) of **-5.89 days**.

**LOT No. 24**

..... EASTERN

MEASURE	RESULT
<i>Weaning weight</i>	<b>75</b>
<i>11 month live weight</i>	<b>134</b>
<i>15 month live weight</i>	<b>165</b>
<i>W12eBV</i>	14.8
<i>EMAceBV</i>	-0.25
<i>CDeBV</i>	-2.06
<i>Estimated loin weight</i>	<b>5.8</b>
<i>Eye muscle area</i>	<b>41.63</b>

**WF 14/17**



Our first Eastern stag on offer in the catalogue. Outstanding growth rates behind this stag **75 kg** weaning and **165 kg** at 15 months. Solid W12eBV of **14.8**, with a massive loin weight and **No. 1 EMA** in the sale.

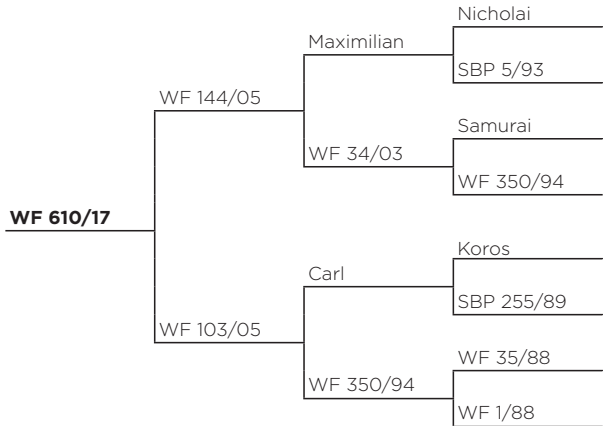




**LOT No. 25**

EUROPEAN

MEASURE	RESULT
Weaning weight	<b>76</b>
11 month live weight	121
15 month live weight	158
W12eBV	14.58
EMAceBV	<b>1.71</b>
CDeBV	-3.09
Estimated loin weight	<b>5.75</b>
Eye muscle area	<b>40.65</b>

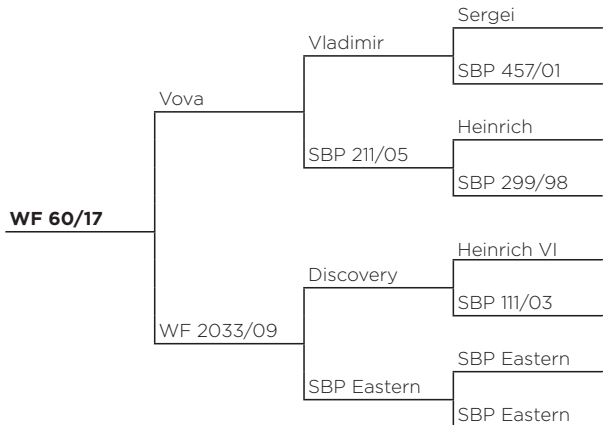


Sired by WF 144/05 out of a Carl x 350 daughter - our most proven hind for breeding efficiency and longevity in our herd. His own breeding breeding efficiency of **55%** reiterating this. Great weaning weight of **76 kg** with solid growth rate performance thereafter. Awesome eye muscle area (EMA) of **40.65 kg** and loin weight of **5.75 kg**. One not to miss!

**LOT No. 26**

EASTERN

MEASURE	RESULT
Weaning weight	64
11 month live weight	120
15 month live weight	152
W12eBV	11.64
EMAceBV	-0.29
CDeBV	-2.90
Estimated loin weight	<b>4.96</b>
Eye muscle area	<b>37.28</b>



Sired by Vova this stag boasts eastern super sires in Vladimir & Heinrich VI. Solid growth rates with an impressive **4.96 kg** loin weight.

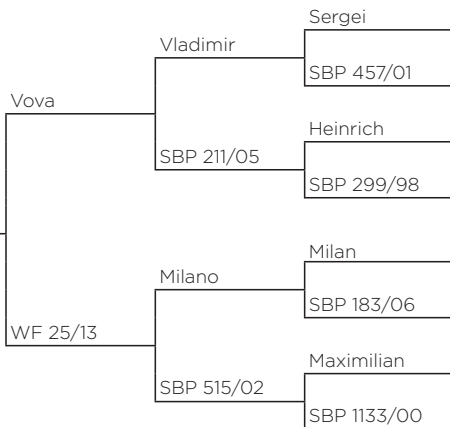


**LOT No. 27**

*EASTERN*

MEASURE	RESULT
<i>Weaning weight</i>	69
<i>11 month live weight</i>	116
<i>15 month live weight</i>	148
<i>W12eBV</i>	9.52
<i>EMAcBV</i>	-1.48
<i>CDeBV</i>	-3.52
<i>Estimated loin weight</i>	4.15
<i>Eye muscle area</i>	30.66

**WF 10/17**



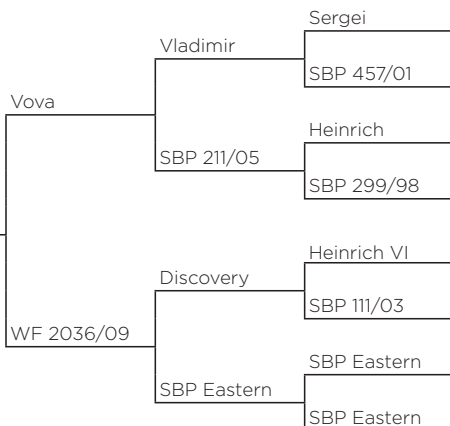
Exciting combination of genetics here with a complete outcross Vova over a Milano hind. Industry stalwart sires Vladimir, Sergei, Heinrich and Maximilian featuring reiterating the depth of genetics in the pedigree.

**LOT No. 28**

*EASTERN*

MEASURE	RESULT
<i>Weaning weight</i>	<b>71</b>
<i>11 month live weight</i>	122
<i>15 month live weight</i>	151
<i>W12eBV</i>	9.42
<i>EMAcBV</i>	-0.24
<i>CDeBV</i>	-3.05
<i>Estimated loin weight</i>	4.92
<i>Eye muscle area</i>	<b>35.81</b>

**WF 54/17**



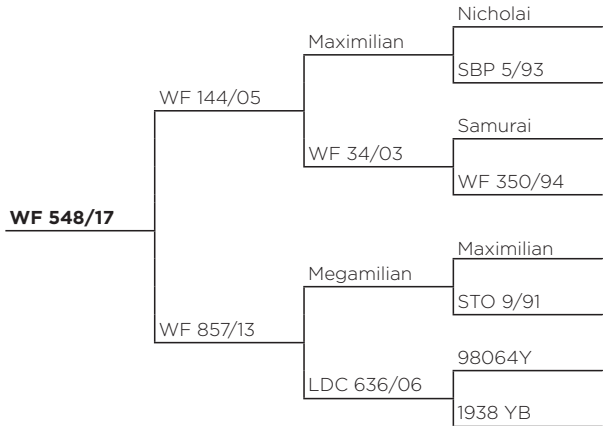
The final Eastern on offer sired by up and coming Vova out of a Discovery hind. Good growth rates and big weaning weight of **71 kg** combined with a good estimated loin weight of **4.92 kg**. Very impressive breeding efficiency of **60.3%**.



**LOT No. 29**

EUROPEAN

MEASURE	RESULT
Weaning weight	67
11 month live weight	118
15 month live weight	150
W12eBV	16.9
EMAceBV	<b>1.05</b>
CDeBV	-3.59
Estimated loin weight	4.81
Eye muscle area	35.57

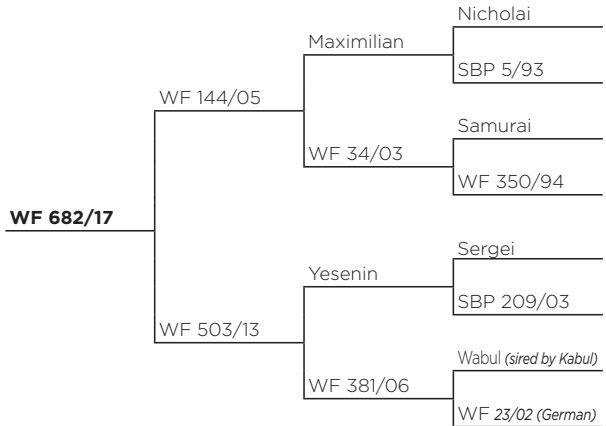


WF 144/05 over a Megamilian sired dam, proven sires.  
Good breeding efficiency with solid performance figures.

**LOT No. 30**

EUROPEAN

MEASURE	RESULT
Weaning weight	66
11 month live weight	<b>125</b>
15 month live weight	<b>159</b>
W12eBV	16.89
EMAceBV	<b>1.24</b>
CDeBV	<b>-4.65</b>
Estimated loin weight	4.46
Eye muscle area	32



WF 144/05 and Yesenin cross. Proven sires, solid growth rates and EBV's.

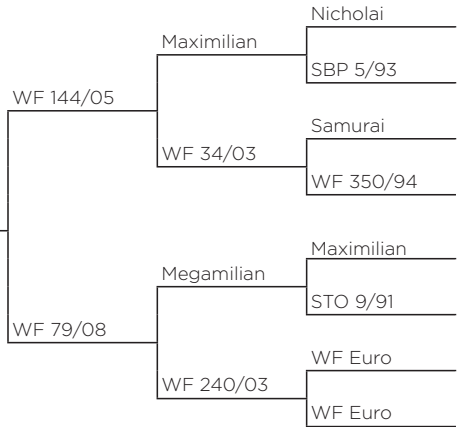


**LOT No. 31**

EUROPEAN

MEASURE	RESULT
<i>Weaning weight</i>	68
<i>11 month live weight</i>	119
<i>15 month live weight</i>	154
<i>W12eBV</i>	16.59
<i>EMAceBV</i>	0.93
<i>CDeBV</i>	-3.96
<i>Estimated loin weight</i>	4.38
<i>Eye muscle area</i>	32.42

**WF 688/17**



WF 144/05 over a Megamilian daughter.  
Consistent growth and meat yield with a good breeding efficiency.

**NOTES:**

---



---



---



---



---



---



---



---



WILKINS FARMING CO  
— BREEDING FOR THE FUTURE —

# NOTABLE SIRES OF DAMS

All sires featured can be found on our website

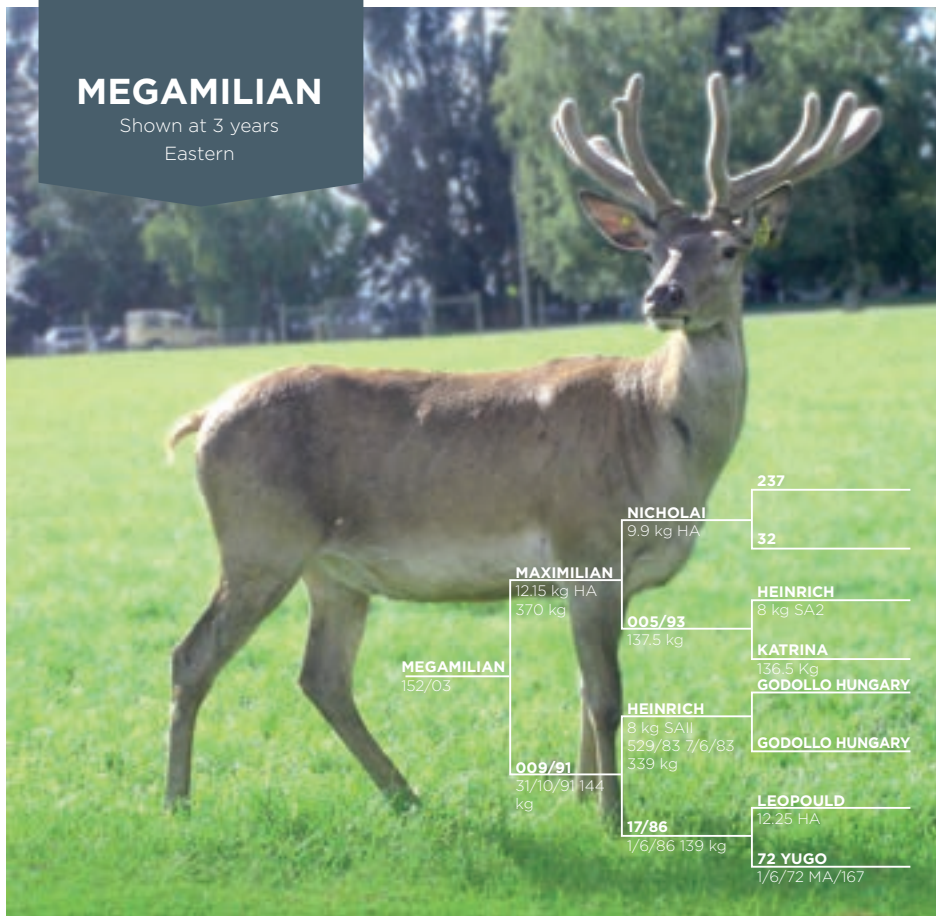
[wilkinsfarming.co.nz](http://wilkinsfarming.co.nz)



Pictured: Yesenin at 6 years

# MEGAMILIAN

Shown at 3 years  
Eastern



**MEGAMILIAN**  
152/03

**MAXIMILIAN**

12.15 kg HA  
370 kg

**009/91**

31/10/91 144 kg

**NICHOLAI**

9.9 kg HA

**HEINRICH**

8 kg SAll  
529/83 7/6/83  
339 kg

**17/86**

1/6/86 139 kg

**237**

**32**

**HEINRICH**

8 kg SA2

**KATRINA**

136.5 Kg

**GODOLLO HUNGARY**

**GODOLLO HUNGARY**

**LEOPOULD**

12.25 HA

**72 YUGO**

1/6/72 MA/167

**No 1. EBV 2 year old at Stanfields 2006 stag sale with a huge body. He was an amazing 262 kg at 2 years which at the time of purchase was quoted as a world record.**

Super quiet and thick set stag with good deep body conformation as you can see here.

He has a large number of progeny (519) across a number of herds which gives us confidence in the accuracy of his current BV.

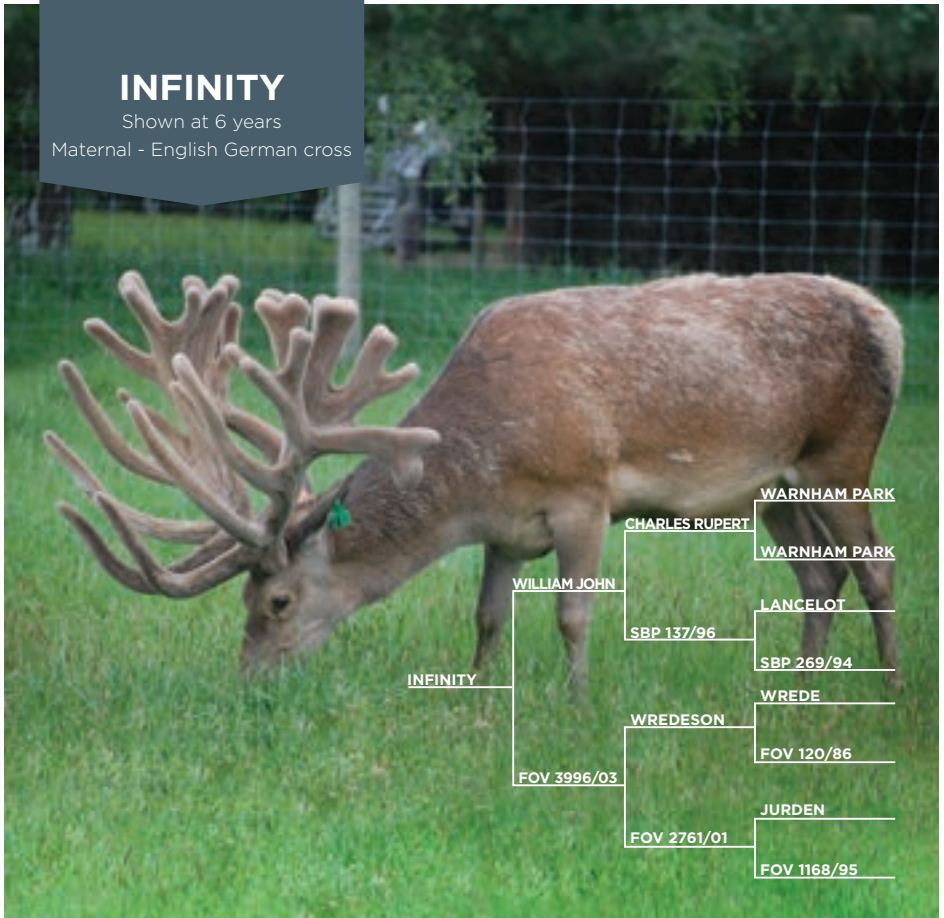
This stag has a current W12eBV of +17.6.

AGE	YEAR	BODY WEIGHT (kg)	VELVET (kg)	GRADE
1/3/2004	2004	74.5		
1/6/2004		91.5		
11 Months		145.5		
W12eBV		17.6		
14/2/2005	2005	175		
2 Years	2006	262		
3 Years	2007		4.5	SA2
4 Years	2008		4.7	SA2
DECEASED	2009			

# INFINITY

Shown at 6 years

Maternal - English German cross



Shown at 6 years

## Infinity is an impressive English/German stag featuring outstanding antler attributes.

He is sired by William John out of a Wredeson hind. Wilkins Farming Co purchased his dam FOV 3996/03 while in calf from the Foveran hind sale, and Infinity was her resulting progeny. The incredible depth to his pedigree is testament to the stag he grew into.

At 5 years of age Infinity achieved an outstanding 612 inches of antler as highlighted in the table below.

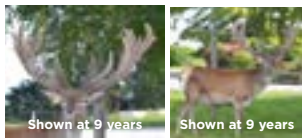
We are continuing to breed strategically via AI with Infinity over our English/German hind base and are continually impressed by the progeny he leaves.

AGE	YEAR	BODY WEIGHT (kg)	VELVET (kg)	GRADE
5 Years	2012 Jan	302	612	IOA



# YESENIN

Shown at 6 years  
Eastern



**Yesenin is an exceptional meat producing stag as well as providing strong velvet and antler credentials.**

He was purchased from Stanfield stud and has provided a solid base for much of our hind herd. Yesenin has excellent constitution combined with solid body weights.

An all-purpose stag, Yesenin provides strong velvet credentials and as a 5 year old he produced a 24-point head

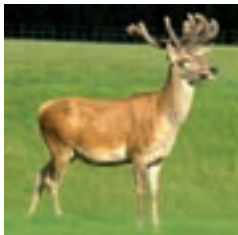
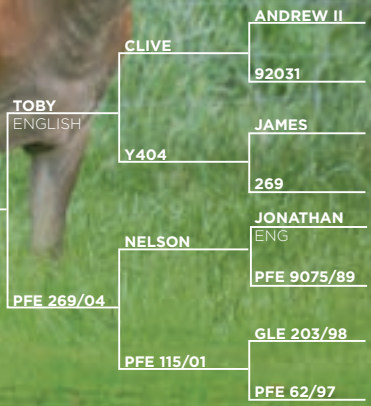
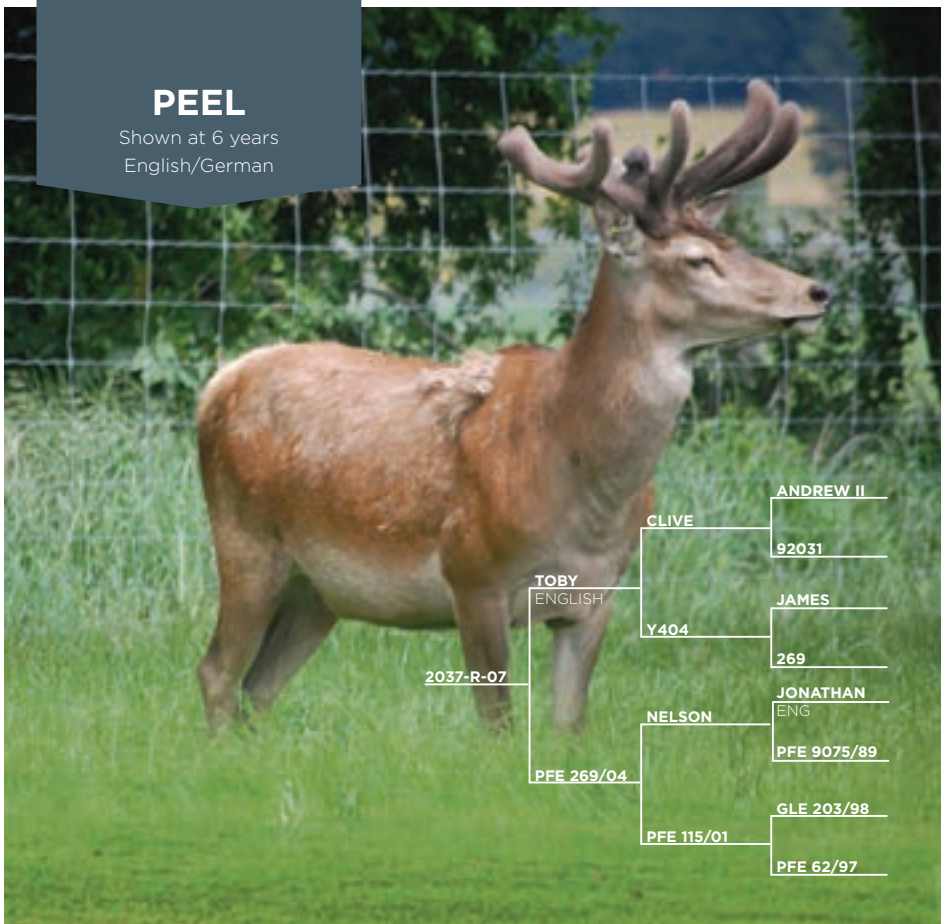
We are extremely pleased with his progeny to date. Yesenin is a serious contender as a sire of progeny for those looking to produce venison.

AGE	YEAR	BODY WEIGHT (kg)	VELVET (kg)	GRADE
Weaning	1/3/06	69.5		
6 Months		91.5		
12 Months		146		
W12eBV		+17.3		
15 Months	2007	170.5		
18 Months		174		
2 Years	2007	205		
3 Years	2008			
4 Years	2009		4.1	A2S
5 Years	2010		HA 350 IOA	24 Points
6 Years	2011		5.2	SA2
7 Years	2012	307	5.8	SA2
8 Years	2013	336	5.8	SA2
9 Years	2014	369	410 IOA	
10 Years	2015	361	8.5	SA2
DECEASED	2016			



# PEEL

Shown at 6 years  
English/German



Shown at 4 years

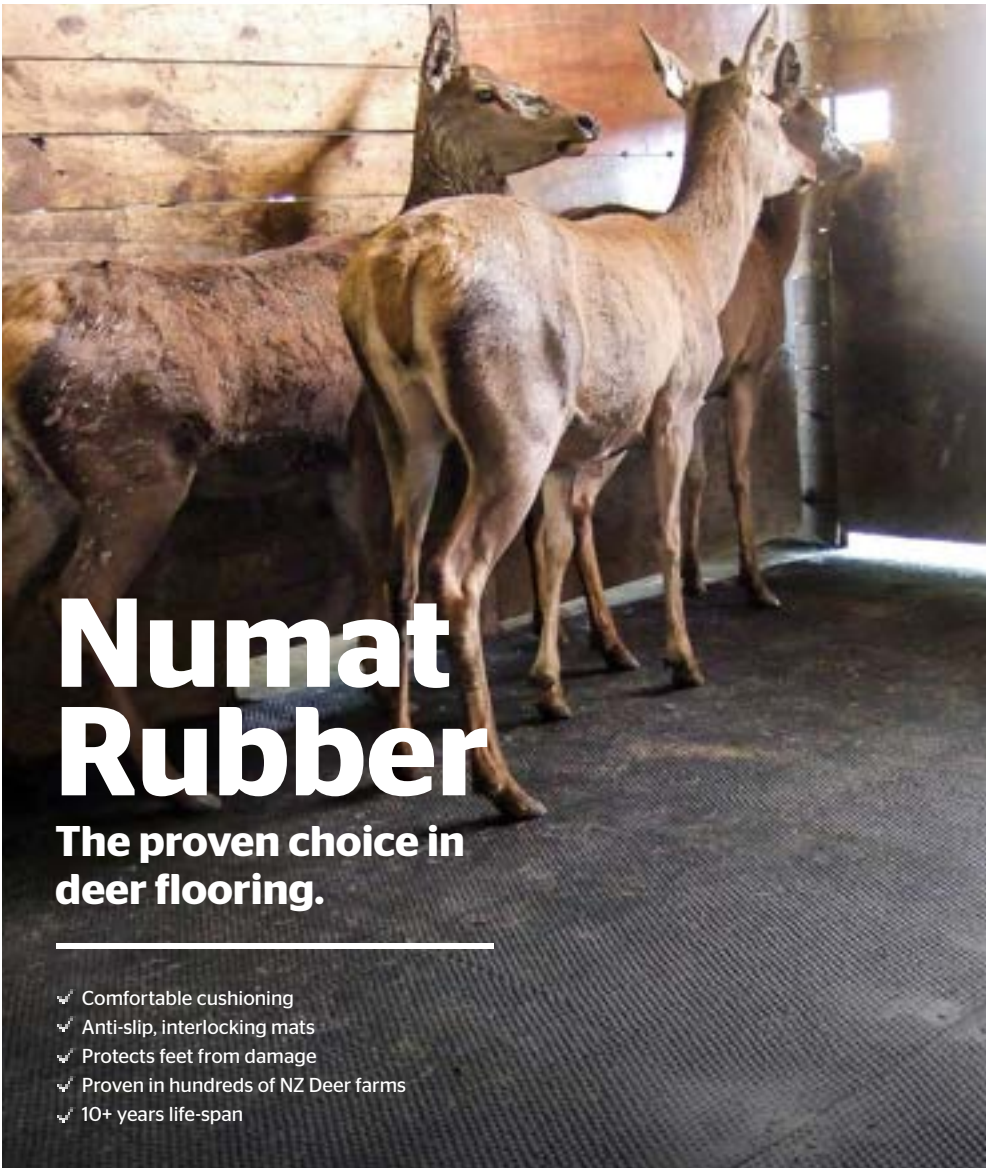
### Peel is an English German cross with a solid W12eBV and top velvet genetics.

Purchased from Peel Forest in 2011 and appropriately named Peel, this stag offers many valuable traits. Of note in the table below is his W12eBV combined with his solid velvet weights.

We are pleased Peel's progeny continue to inherit his high growth rate and strong velvet credentials.

If you're looking for a top all round maternal sire we highly recommend Peel.

AGE	YEAR	BODY WEIGHT (kg)	VELVET (kg)	GRADE
16/09/2008		103.5		
25/11/2008		125.5		
W12BV		+9.6		
2 Years	2009			
3 Years	2010	222	4.4	A2S
4 Years	2011	229		
5 Years	2012		5.68	SA2
6 Years	2013		8.15	SA2
7 Years	2014		8.20	SA2
8 Years	2015		7.25	SA2
9 Years	2016		8.35	SA
10 Years	2017	278	6.25	SA2
11 Years	2018	287	4.8	



# Numat Rubber

**The proven choice in  
deer flooring.**

---

- ✔ Comfortable cushioning
- ✔ Anti-slip, interlocking mats
- ✔ Protects feet from damage
- ✔ Proven in hundreds of NZ Deer farms
- ✔ 10+ years life-span



*"Numat has been in our sheds for a number of years. It provides a quieter environment for deer handling, minimises injury, and is easy to clean. We have no hesitation in endorsing Numat."*

**- Mike Wilkins, Wilkins' Farming Ltd.**



**Call 0800 686 119 | [www.numat.co.nz](http://www.numat.co.nz)**



WILKINS FARMING CO  
— BREEDING FOR THE FUTURE —

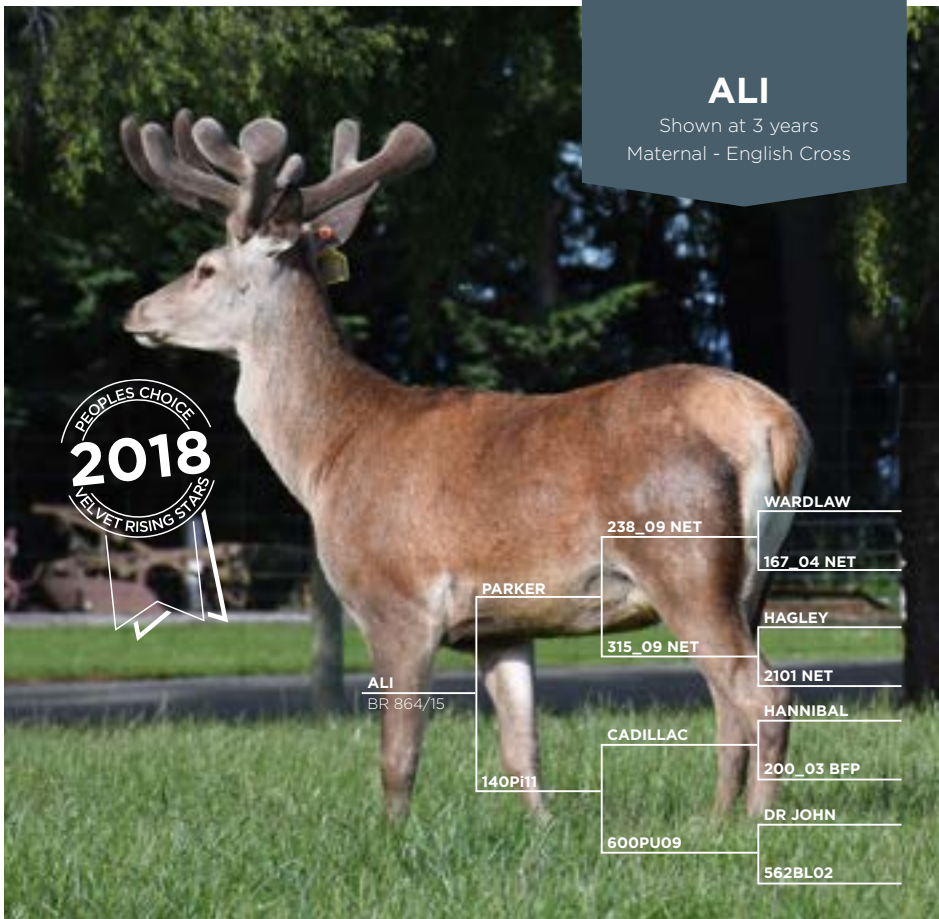
# FUTURE SIREs

All sires featured can be found on our website

[wilkinsfarming.co.nz](http://wilkinsfarming.co.nz)



Pictured: Cardrona at 4 years



# ALI

Shown at 3 years  
Maternal - English Cross



ALI  
BR 864/15

PARKER

140Pi11

238\_09 NET

315\_09 NET

CADILLAC

600PU09

WARDLAW

167\_04 NET

HAGLEY

2101 NET

HANNIBAL

200\_03 BFP

DR JOHN

562BL02



2yo velvet

**Ali is an outstanding all-round English stag, with strong venison and velvet credentials.**

Bred by Brock deer, Ali is sired by Parker out of a Cadillac hind, and was purchased by Wilkins Farming Co in 2018.

His 2 year weight of 216 kg, combined with 6 kg of velvet bodes well for the future of this stag within our Maternal breeding programmes.

In 2018, Ali won the Overall People's Choice Award at the Rising Stars velvet and hard antler competition. We are excited to see how his velvet and venison production develops with age.

AGE	YEAR	BODY WEIGHT (kg)	VELVET (kg)	GRADE
Weaning	2016	82		
15 Months	2017	137		
2 Years	2017	216	6	SA2
3 Years	2018	263	6.6	SA2
4 Years	2019		9.8	SA2



# BIG GEOFF

Shown at 4 years  
Maternal - English Cross



Shown at 3 years



Shown at 3 years

**Big Geoff is an imposing stag within the herd. Although, we only purchased him (from Peel Forest) in 2017, we are looking forward to his growth and velvet attributes coming to fruition.**

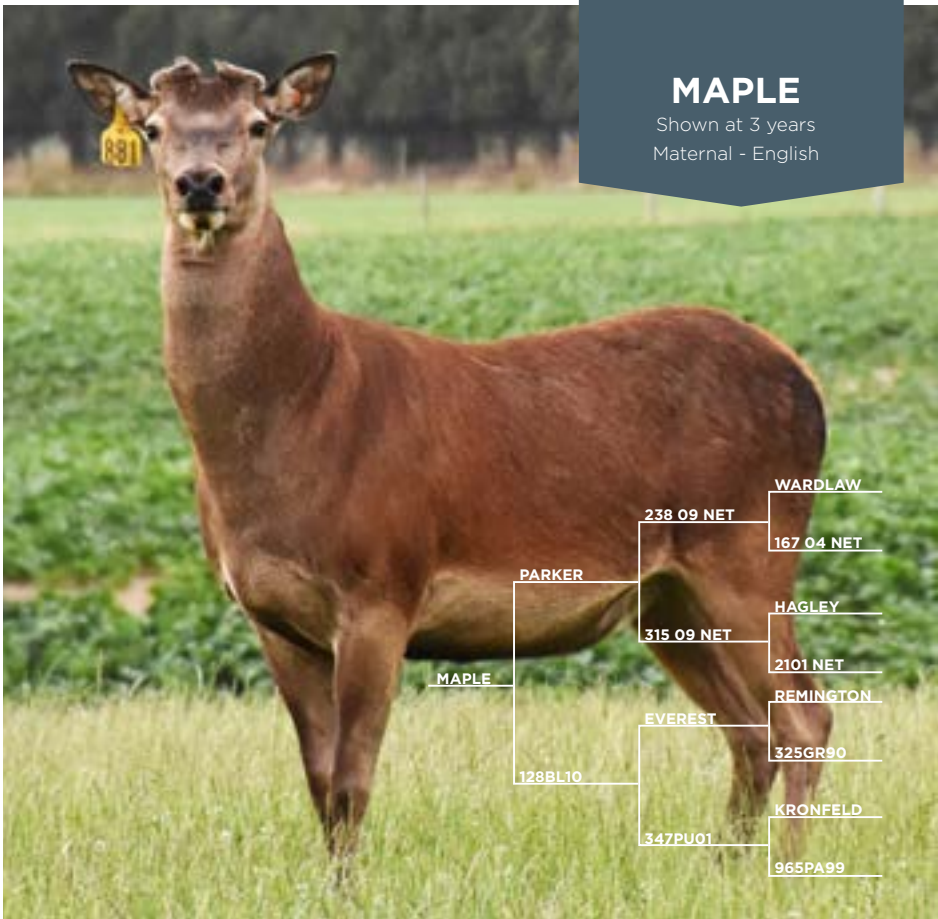
Sired by Jefferson out of a general hind, Big Geoff is 1/2 English, 1/4 German and 1/4 European.

Big Geoff is appropriately named, given his impressive live weights of 249 kg at 3 years (sale day) and his W12eBV of 19.94 which is solid for this breed type.

As shown below, his impressive SA2 velvet at 3 years was 7.2 kg and he cut an additional 4 kg of regrowth. A massive total of 11.3 of velvet at 3 years of age.

We are excited to bring you his progeny in coming years.

AGE	YEAR	BODY WEIGHT (kg)	VELVET (kg)	GRADE
W12eBV		19.94		
12 Months	2015	128		
2 Years	2016		4.6	A2S/SA2
3 Years	2017	249	7.2	SA2
4 Years	2018	278	395 2/8	IOA



Shown at 3 years

**Maple was purchased from Brock deer in January 2019. Sired by Parker out of an Everest hind, this stag combines some really exciting velvet and growth rate genetics.**

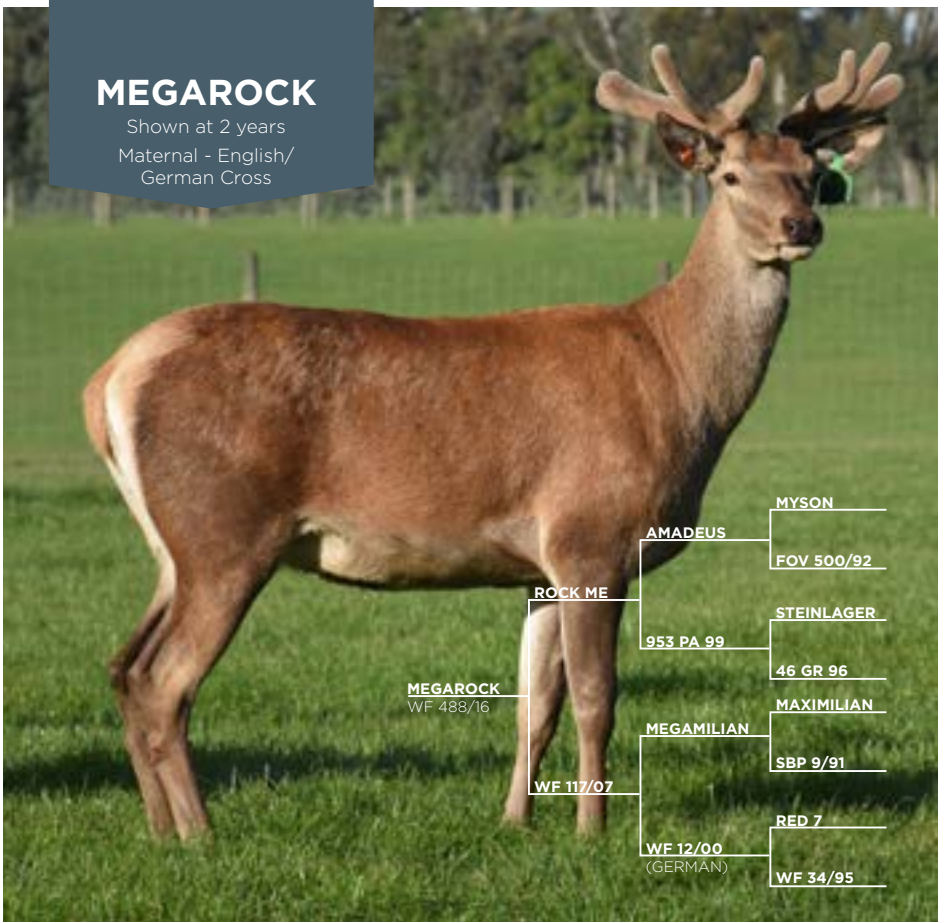
He had a notable live weight at weaning in April of 83 kg and his velvet head has incredible beam and tops, Maple cut an impressive 6.7 kg of SA2 at 2 years. He has a deep red coat colour, an impressive body, temperament.

We are looking forward to breeding from this stag strategically for both body and velvet.

AGE	YEAR	BODY WEIGHT (kg)	VELVET (kg)	GRADE
Weaning Weight	2016	83		
15 Months	2017	136		
2 Years	2017		6.7	SA2
3 Years	2018	262	8.84	SA2

# MEGAROCK

Shown at 2 years  
Maternal - English/  
German Cross



**MEGAROCK**  
WF 488/16

**ROCK ME**

**WF 117/07**

**AMADEUS**

**953 PA 99**

**MEGAMILIAN**

**WF 12/00**  
(GERMAN)

**MYSON**

**FOV 500/92**

**STEINLAGER**

**46 GR 96**

**MAXIMILIAN**

**SBP 9/91**

**RED 7**

**WF 34/95**



Shown at 2 years



Sire : Rock Me

**Sired by our impressive Rock Me out of a Megamilian hind with strong German influence.**

His massive weaning weight of 81 kg and then growth rate to achieve 165 kg at 15 months is exceptional (for this type), as is his deep thickset body.

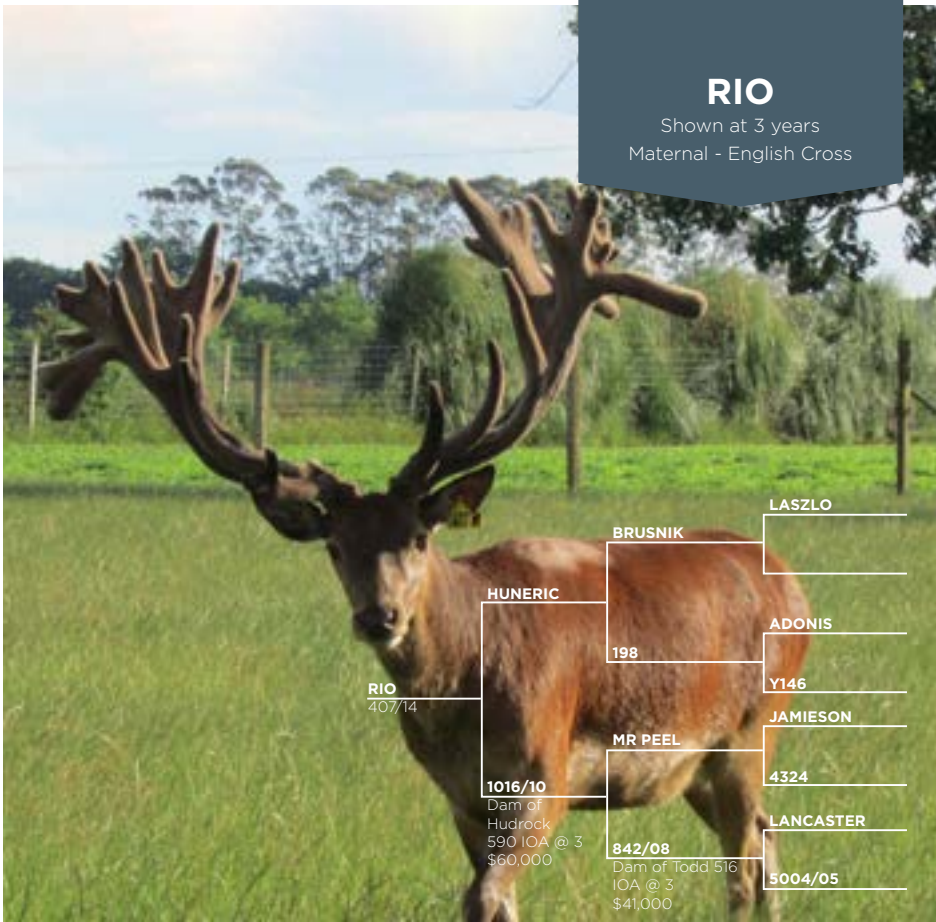
As a 2 year old Megarock cut a respectable 4.8 kg of SA2 velvet, combined with a W12eBV of 15.26 as shown in the table below. This stag is an excellent all-rounder with such a strong English/German mix, and is used in our maternal breeding programme

AGE	YEAR	BODY WEIGHT (kg)	VELVET (kg)	GRADE
6 Months	2017	81		
11 Months	2017	125		
15 Months	2018	165		
W12eBV		15.26		
LEANeBV		4.92		
Est Loin Weight		4.05		
EMA		30.87		
2 Years	2018	257 (Jan 2019)	4.8	SA2



# RIO

Shown at 3 years  
Maternal - English Cross



RIO  
407/14

HUNERIC

1016/10  
Dam of  
Hudrock  
590 IOA @ 3  
\$60,000

BRUSNIK

198

MR PEEL

842/08  
Dam of Todd 516  
IOA @ 3  
\$41,000

LASZLO

ADONIS

Y146

JAMIESON

4324

LANCASTER

5004/05



Shown at 3 years



Shown at 4 years

## Rio is an eye catching and exciting young sire with solid velvet and venison credentials.

Purchased from Crowley Deer in 2018, Rio features an excellent combination of velvet genetics with Huneric as his sire and his dam sired by Mr Peel.

In 2016 Rio won the Rising stars 1 year old competition with a 40-point head measuring 421 IOA including spread and burrs. He was then used as a sire at 15 months of age by Tower Farms and grew an impressive wide antler with 40 points at 2 years of age.

We are using this stag strategically to breed for body and antler with the likes of our Infinity hinds and are eagerly awaiting our first crop of his progeny due November 2018 onwards.

AGE	YEAR	BODY WEIGHT (kg)	VELVET (kg)	GRADE
Weaning		69		
15 Months		127		
2 Years		185		
3 Years	2017	TBA		HA
4 Years	2018	254	493 4/8	HA
5 Years	2019		10	SA2





# Proud to keep Wilkins Farming Moving

**Our local team are here to  
help support your business with**

**Bulk Fuel Delivery • Storage Solutions  
HSNO Management • Total Oil & Lubricants  
Fuel for Schools • Fly Buys**

**Phone 0800 99 99 86**

**[www.northfuels.co.nz](http://www.northfuels.co.nz)**



## Definitions

W12eBV – the estimated breeding value (EBV) for weight at 12 months of age (yearling weight) expressed in kilograms (kg) of live weight.

EMAcBV – the estimated breed value for eye muscle area (size of the muscle/meat on the ribs as measured by ultrasound scanning). The “c” very importantly stands for carcass weight corrected meaning you can select animals with more loin muscle area for their carcass weight.

CDeBV – the estimated breeding value for conception date, it is expressed in days. It is currently the only EBV for reproduction. Unlike many EBV a negative value is better, meaning hinds will calve earlier.

Estimated loin weight - Eye muscle area x the length of the loin muscle to give an estimated meat weight of the muscle measured in kilograms (kgs).

EMA - (Eye muscle area) – the area of the traced eye muscle (loin) over the 12th rib using ultrasound scanning.

## DEERSelect

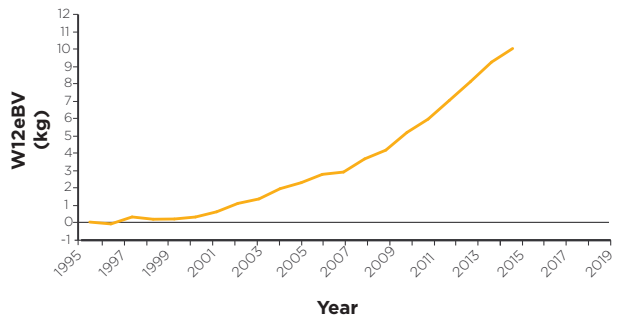
DEERSelect provides genetic evaluations for the deer industry. Evaluations are completed six times a year using all information in all connected herds to estimate genetic merit for individuals.

An estimate of the genetic merit of an individual for a trait relative to the average merit of all animals in the base year is called a breeding value.

The breeding values are based on the performance of an individual and all known relatives. Breeding values are corrected for environmental factors, such as mob, age of dam, sex and differences between seasons. As more information is collected the breeding values are updated.

Breeding values are expressed in the same unit as they are measured. For growth and velvet they are in kilograms and for conception date they are in days.

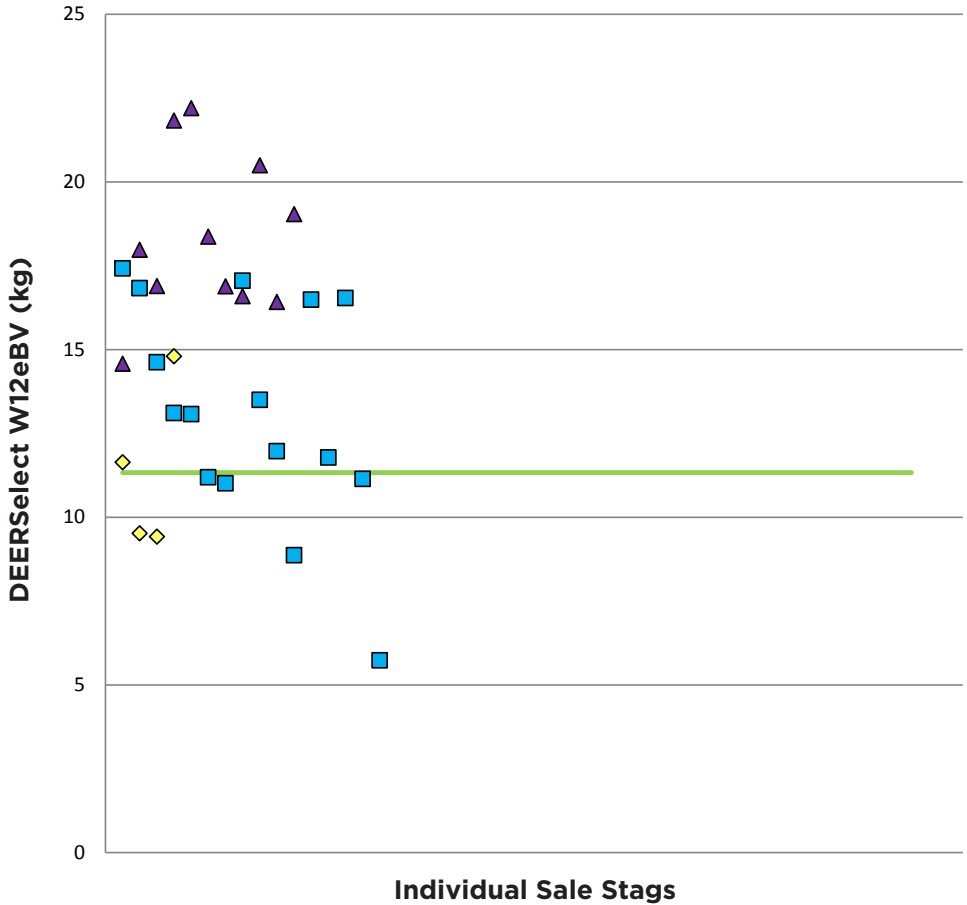
### YEARLING WEIGHT eBV



Genetic progress in 12 month weight Breeding Value across all DEERSelect herds over the last 20 years.



### Wilkins Farming Co 2019 North Island Sale Stag W12eBV



KEY Eastern Stags Maternal Stags European Stags DEERselect Mean all 2017 born

# Scanning for Meat Yield

## WILKINS FARMING CO IN CONJUNCTION WITH NEVILLE JOPSON (ABACUS BIO)

The initial focus of the Wilkins Farming Co genetic improvement programmes for venison production was on improving growth rates, for the several years weight of meat recovered from a carcass has also been measured and improved.

High growth rate animals achieve slaughter weights at an earlier age compared to low growth rate animals, an important aspect in running an efficient venison operation. Improving the weight of meat recovered from a carcass is also very important.

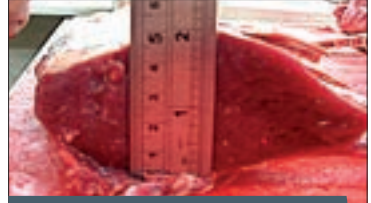
Wilkins Farming Co have been using CT and ultrasound scanning to “look inside” the body of an animal. Both CT and ultrasound are human medical technologies that have been adapted for livestock.

- Ultrasound scanning is used to measure the eye muscle area (EMA), which indicates meat production. We scan approximately 300 of our hinds per year with this technology to ensure improvements of this key trait.
- CT scanning provides a very effective measurement of the meat and fat within the carcass. CT measurements are as effective as slaughtering then dissecting out the meat from the fat and bone in the carcass, however this way the stag is still alive and can be used in our breeding programme. Due to the expense of CT scanning only a small number of stags are scanned each year – these stags are selected based on their sire and performance data.

The measurements from CT and EMA scanning are also entered into DEERSelect where BV's (breeding values) for performance are derived giving buyers the confidence that the animals purchased are an asset to their herd.

Using the aforementioned technologies, Wilkins Farming Co are advancing with our venison production through better carcass yields, as well as further enhancing the sale stags we offer to the market.

### EVALUATING THE CARCASS



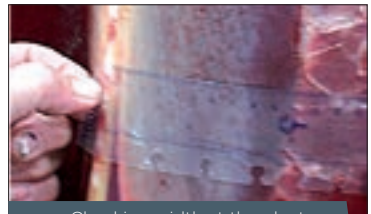
Checking loin depth at plant



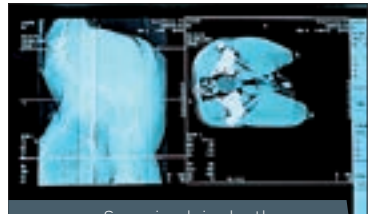
EMA area scanning



CT Scanning



Checking width at the plant



Scanning loin depth



WILKINS FARMING CO  
— BREEDING FOR THE FUTURE —

## WHY MATERNAL?

Maternal Red Deer are bred specifically as replacement hinds.

Maternal sires are a great solution to introduce to a European herd to stabilise by introducing the hardier influences from English and German traits.

The key Maternal attributes we look for are:

1. Good growth rates
2. Breeding efficiency including milking ability
3. Hardiness
4. Good meat yield i.e. loin size and meat to bone ratios
5. Type of animal i.e. good body conformation and constitution
6. Good temperament
7. High fertility
8. Velvet production

As shown Churchill in his profile (page 11), is New Zealand's most proven Maternal Sire (Number One for English Sire growth rate for 7 years).



Churchill show at 5 years.





## WHY EASTERN?

Our Eastern deer are bred specifically for venison and velvet production. Our Eastern stud contains incredible depth with 30 years of selective breeding in New Zealand.

The key Eastern attributes we look for are:

1. High growth rate - Easterns are the largest type of Red deer and size is an important attribute
2. Early conception - Easterns mate earlier therefore calve earlier
3. Clean heavy beamed velvet and antler combined with length and width in beam that is not commonly seen in other Red Deer. Seldom do you see snags and bifurcations
4. Good temperament
5. Type of animal i.e. good body conformation and type

As shown below Vladimir clearly demonstrates the key attributes we strive for in our Eastern animals.



Vladimir shown at 7 years.



WILKINS FARMING CO  
— BREEDING FOR THE FUTURE —

European

## WHY EUROPEAN?

Our European Red Deer are bred specifically for venison production, while some can also be used for both Terminal and Maternal breeding programmes depending on particular bloodlines and objectives.

The key European Red Deer attributes we look for are:

1. High growth rate
2. Good meat yield i.e. loin size and meat to bone ratios
3. Type of animal i.e. good body conformation and constitution
4. Good temperament
5. High fertility
6. Velvet production

As shown below WF 144/05 demonstrates a perfect mix of all of the key European traits. View his profile on page 15.



WF 144/05 shown at 4 years.

# In-yard fingertip access to full velveting data

## TSi 2 Livestock Manager

The top of the line choice in Weigh Scales, the TSi is an all in one weighing and data collection system for improved livestock performance:



View the pedigree and progeny of an animal in the yard and view summary stats on its progeny.

Review full weigh history for an animal at the touch of a button.

Includes APS Professional, simply the best stock analysis software available and extremely easy to use.

For more information call your local Gallagher Territory Manager on 0800 731 500

0800 731 500  
www.gallagher.com







At BM our approach is to work with our clients to help focus on the future of their business.

Call Alan Maxwell today to help with the future of YOUR business.

Mobile: 027 280 3860

Email: [alan@bm.co.nz](mailto:alan@bm.co.nz)

**BM Accounting Limited**

CHB 06 857 8901 | HAVELOCK NORTH 06 876 7159

**[bm.co.nz](http://bm.co.nz)**



# Aon Stag Insurance

---

**Protect your income by insuring your stags against the unexpected**

Aon's stag insurance has a range of cover options available including death, loss of use, theft, escape and transit cover. Cover can be short or long term and as flexible as you need it to be.

**For more information talk to your local Aon broker today:**

**Brian Pitcher**

T: 03 208 8803

M: 027 436 9055

**Alan Thomas**

T: 03 208 8801

M: 027 706 8269

[aon.co.nz](http://aon.co.nz)



# Specialists in deer performance

PGG Wrightson Deer provide a comprehensive service to enhance the performance of your Deer property.

Our dedicated team of Deer Specialists operates throughout New Zealand, servicing all aspects of the Deer industry.

From Pasture to Processor, Venison, Velvet and Trophies, Breeders and Finishers, Stud and commercial Deer farmers, Genetics, buying and selling.

The expertise within the PGG Wrightson Deer Specialist team could prove invaluable in the management of your Deer property.

## Contact your local Deer Specialist today.

**Ron Schroeder**

Canterbury/West  
Coast/Marlborough  
027 432 1299

**Graham Kinsman**

Deer Stud  
Co-ordinator  
027 422 3154

**John Williams**

Otago  
027 241 4179

**Murray Coutts**

South/Mid  
Canterbury  
027 403 9377

**Ben Beadle**

Southland  
027 728 1052



# NAIT APPROVED ENVIRO & LEADERTRONIC TAGS

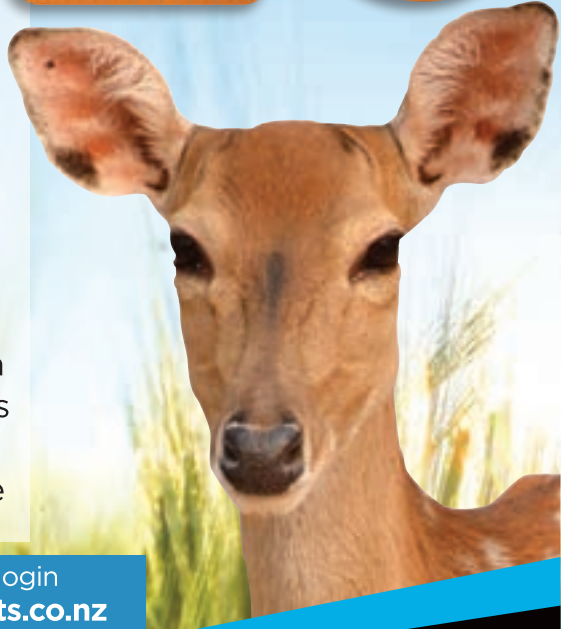
100% RETENTION GUARANTEE\*

\*CONDITIONS APPLY

LEADER PRODUCTS  
NAIT ENVIRO &  
LEADERTRONIC  
TAGS are designed  
specifically for today's  
farming conditions.

**Benefit from:**

- Lifetime retention guarantee\*
- Durable hard-wearing design
- Quick and easy application
- No lump or damaged chips
- Exceptional read range
- Smooth easy-clean surface



Order on the NZDFA website after login  
more info @ [www.leaderproducts.co.nz](http://www.leaderproducts.co.nz)  
or freephone Leader **0800 243 824**



WILKINS FARMING CO  
— BREEDING FOR THE FUTURE —

THE WILKINS FAMILY  
IN CONJUNCTION WITH  
GEORGE AND LAURA  
WILLIAMS  
& STAFF

— INVITE YOU —

to join us for a refreshment and  
BBQ following the sale

**13 DECEMBER 2019**

GEORGE AND LAURA WILLIAMS, TE MAIRE 678 MATHESON ROAD, HAWKE'S BAY



# Our rural business is growing, so our team is too.

---

*For more visit [nzt.nz](http://nzt.nz)*

---





WILKINS FARMING CO  
— BREEDING FOR THE FUTURE —

## Health & Safety

The Wilkins Farming Co team are committed to health and safety. To ensure everyone's safety today we need you to adhere to our health and safety policies.

Please adhere to designated walkways whilst viewing our deer.

In the event of an emergency please follow one of our team's instructions. Emergency exits are located through the door you entered the building and at the large sliding doors at the rear of the room.

The assembly area is by the parking area across the yard from the shed.

If anyone has an accident whilst attending the sale please notify Pauline Pattullo from Wilkins Farming Co. A first aid kit will be on site.

Food and refreshments are available after the sale, there are both alcoholic and non-alcoholic drinks on offer.

If drinking alcohol please ensure you have a sober driver to get you home - we want to see you next year!

 **Ballance** agri-nutrients | Together,  
Creating the Best  
Soil and Feed on Earth

# SustaiNability: The right choice for the environment and your ROI

 **SustaiN**  
Powered by AGROTAIN

SustaiN contains the nitrogen stabiliser AGROTAIN® which halves the amount of nitrogen lost as ammonia, compared to urea, keeping the N right where it should be, ready for uptake by the pasture or crop.

If you're looking for a better return on your investment, better ongoing productivity and a nitrogen solution that's proven better for the environment, SustaiN is always the right nitrogen choice.

**ballance.co.nz** | 0800 222 090



# Conditions of Sale



## Special Conditions

No animals, embryos or semen sold by Wilkins Farming Co or their germplasm, any subsequent progeny or germplasm, including the semen and germplasm of that progeny may be supplied to any third party without the express written permission of Wilkins Farming Co.

## Conditions of Sale

1. The sale will be conducted by PGG Wrightson with the conditions of sale as set down by the Stock and Stations Agents Association, a copy of which is exhibited in the office on sale day.
2. Each lot becomes the purchaser's property and risk at the fall of the hammer.
3. Warranties and Insurance are covered under separate headings.
4. Terms are strictly cash unless prior arrangements are made with the auctioneers. Accounts not paid within 14 days of sale shall bear interest, at current rate per annum from the date of sale.
5. The sale is conducted exclusive of GST.
6. A buyers commission of 4% is payable to non-participating companies and recognised independent agents introducing and accompanying purchasers to the sale providing prior arrangements [No later than 24 hours prior to sale] are made with PGG Wrightson.
7. Intending purchasers are required to register with the auctioneers prior to the commencement of the sale.
8. Antler will be cut after sale and remain property of vendor unless advised differently by purchaser on sale day.
9. All sale stags have passed Johnes testing.
10. Wilkins Farming Co Breeding Herds have been TB tested clear and carry C10 plus status.
11. Wilkins Farming Co will stand by their stag's performance, though the vendor makes no guarantees.
12. Wilkins Farming Co and our employees accept no responsibility for any errors occurring within this catalogue.
13. Wilkins Farming will organise the freight on account of the purchaser unless requested otherwise.

## Disclaimer

*All details and descriptions as to stock referred to in this catalogue have been supplied to PGG Wrightson by the vendor and have not been independently verified by PGG Wrightson. PGG Wrightson, its employees and agents make no representations or warranties or acknowledgement of any kind whatsoever in relation to any part of this catalogue [including but not limited to accuracy or completeness of details and descriptions of stock {and other contents}]*

*Purchasers, advisers and all other persons viewing or dealing with the stock must make their own assessment on the stock and the information in this catalogue.*

*PGG Wrightson, its employees and agents are not responsible or liable in any way whatsoever, whether in contract, tort [including negligence], or otherwise, to any person for any loss or any damage whatsoever arising directly or indirectly from any information or misrepresentation included or omitted from this catalogue.*



# WILKINS FARMING CO

— BREEDING FOR THE FUTURE —

## HOST FARM

**GEORGE AND LAURA WILLIAMS, TE MAIRE  
678 MATHESON ROAD, HAWKE'S BAY**

The Williams family are established Hawke's Bay farmers with vast experience in farming deer. They have been farming deer for 30 years and are the third generation of Williams on Te Maire. We are grateful to George and Laura for helping us bring our stags to the North Island.



All stags sold at the North Island sale are bred on our home property in Southland. As spikers these stags have been sorted, with an allocation trucked to the North Island prior to button drop before the sale date.

The South Island sale is the larger of the two sales, with the difference being the top six stags bred for venison, and the top pure Easterns with proven antler breeding lineage, will be sold from the home farm in Southland. The balance of the stags are then divided equally between the two sales.



# WILKINS FARMING CO

— BREEDING FOR THE FUTURE —

## KEY CONTACTS

---

### **MICHAEL WILKINS**

M 027 249 9317

E [mike@wilkinsfarming.co.nz](mailto:mike@wilkinsfarming.co.nz)

### **GEORGE WILLIAMS**

M 027 447 6880

E [tiko8565@gmail.com](mailto:tiko8565@gmail.com)

### **PAULINE PATTULLO**

**Genetics Manager**

M 027 249 9309

E [livestockgenetics@wilkinsfarming.co.nz](mailto:livestockgenetics@wilkinsfarming.co.nz)

or contact your local specialist Deer Livestock Agent

Please bring this catalogue with you on sale day



Big Geoff shown at 4 years

**WILKINSFARMING.CO.NZ**